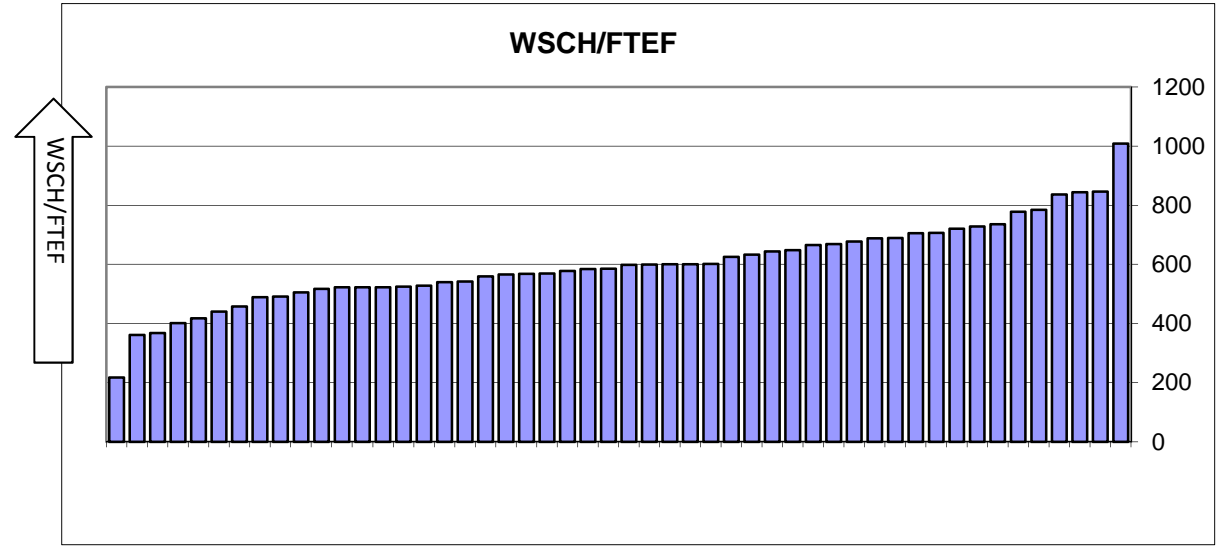
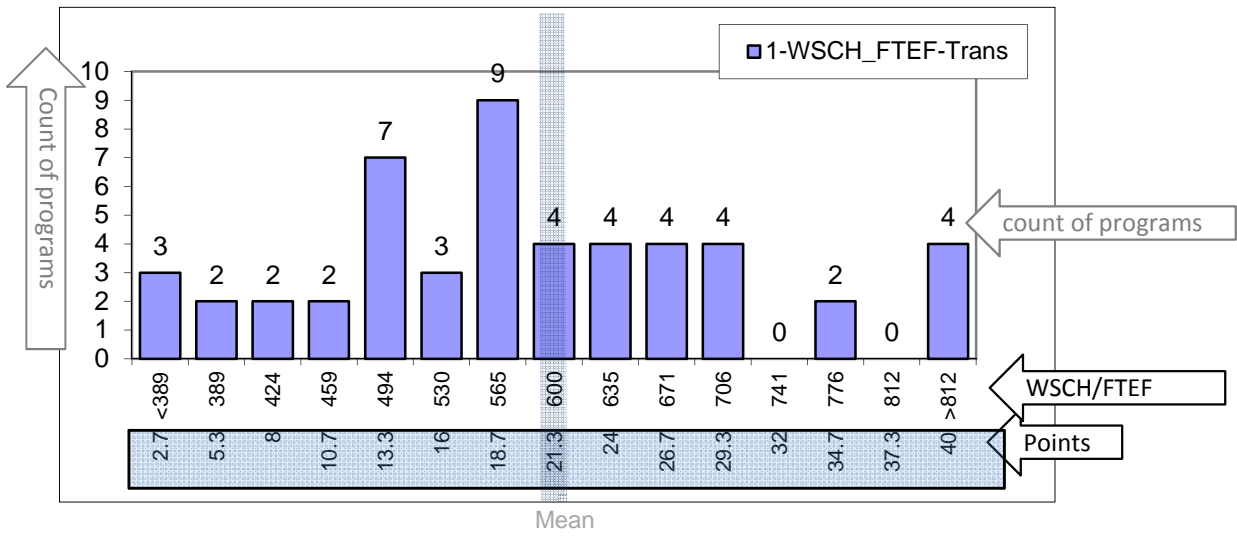


**Criterion 1: Efficiency**  
**Transfer and Basic Skills Programs**

<b>Mean</b>	<b>600.2</b>
<b>Median</b>	<b>592.1</b>
Standard Deviation	141.0
<b>Minimum</b>	<b>217.3</b>
<b>Maximum</b>	<b>1009.0</b>
Count	50



Points score bands are established at each one-quarter standard deviation, working outward from the mean.



Possible Points = 40

Academic years 2006-07 through 2010-11; 5 years.  
 Source: Datatel XFTE and XFAS (Faculty Assignments) reports. Compiled by PRO.  
 Same datasets as used in Program Planning; although with all terms included.

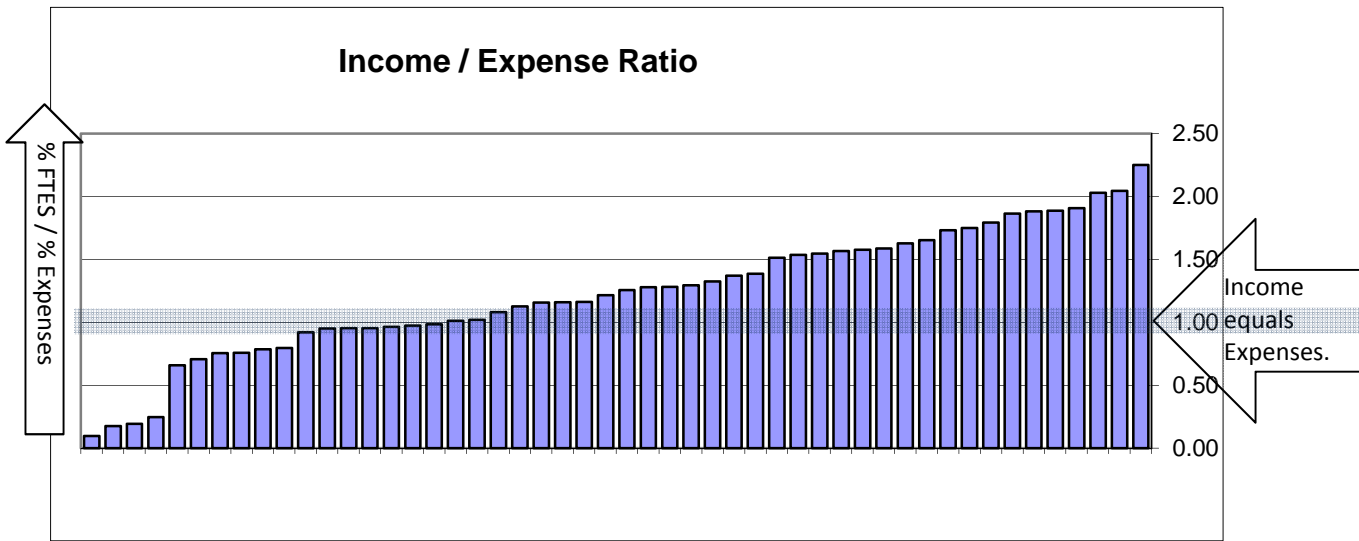
Nov. 10. 2011

# Criterion 1: Efficiency

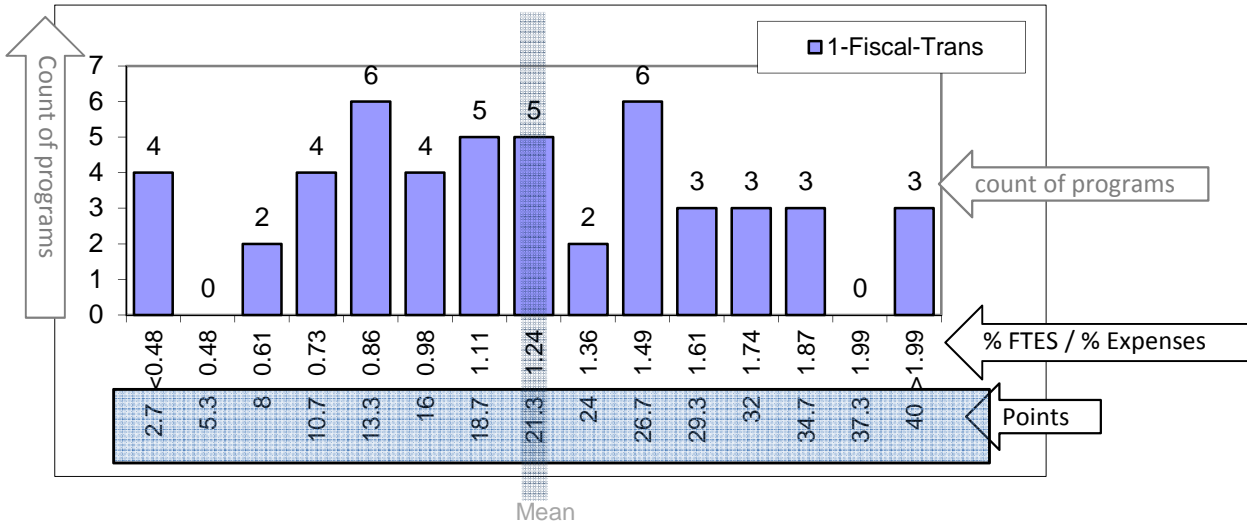
## Transfer and Basic Skills Programs

<b>Mean</b>	<b>1.24</b>
<b>Median</b>	<b>1.24</b>
Standard Deviation	0.50
<b>Minimum</b>	<b>0.10</b>
<b>Maximum</b>	<b>2.25</b>
Count	50

Total program FTES (Income) as a percent of the total college FTES.  
 -- DIVIDED BY --  
 Total program costs as a percent of the college instructional expenses.



Points score bands are established at each one-quarter standard deviation, working outward from the mean.



Possible Points = 40

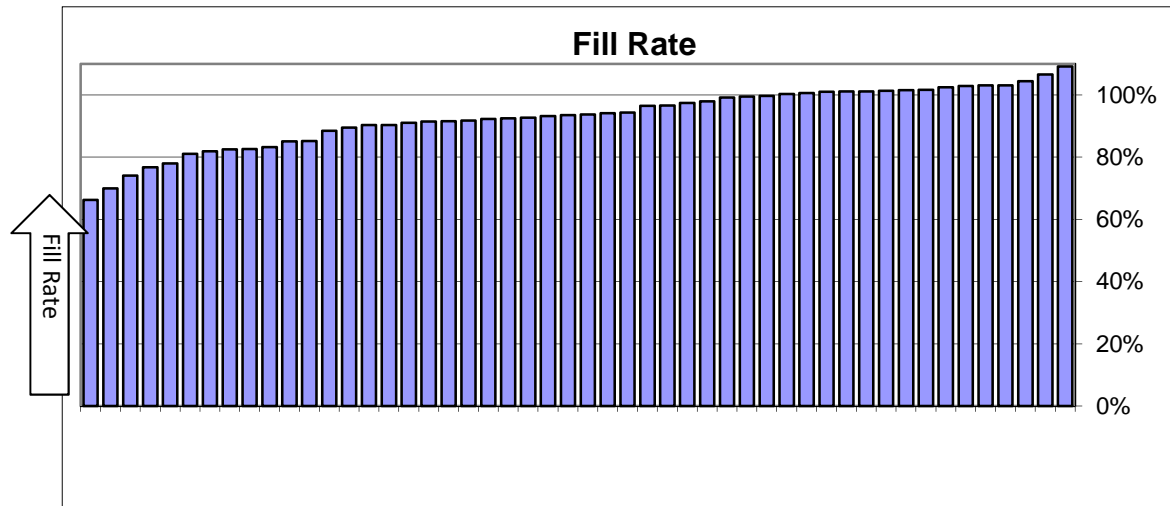
Academic years 2006-07 through 2010-11; 5 years.  
 Source: Datatel GLBA report, prepared by the Office of Instruction.  
 Same datasets as used in Program Planning.

Nov. 10. 2011

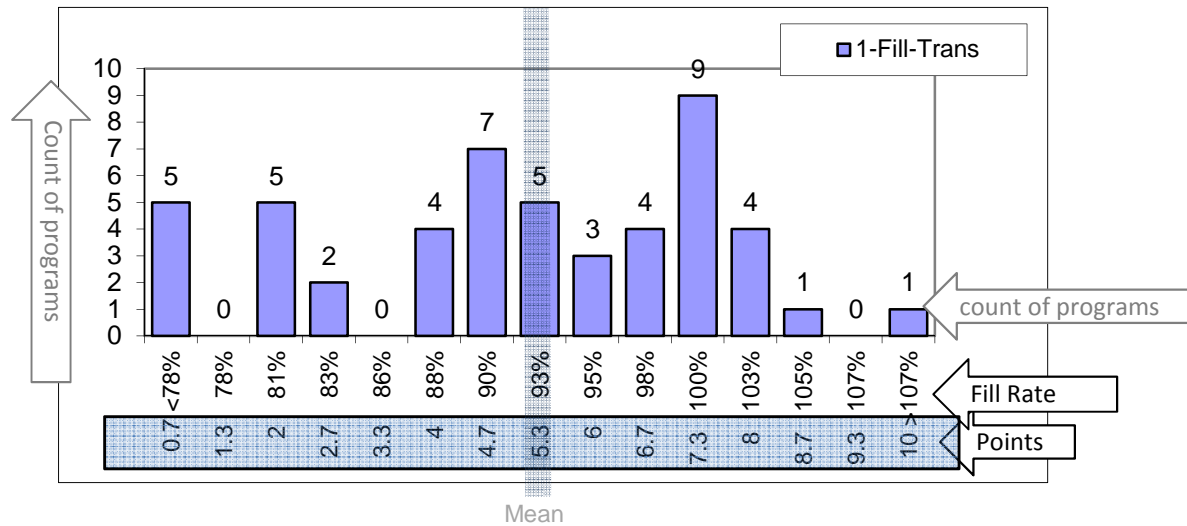
## Criterion 1: Efficiency

### Transfer and Basic Skills Programs

<b>Mean</b>	<b>92.9%</b>
<b>Median</b>	<b>93.6%</b>
Standard Deviation	9.6%
<b>Minimum</b>	<b>66.3%</b>
<b>Maximum</b>	<b>109.2%</b>
Count	50



Points score bands are established at each one-quarter standard deviation, working outward from the mean.



Possible Points = 10

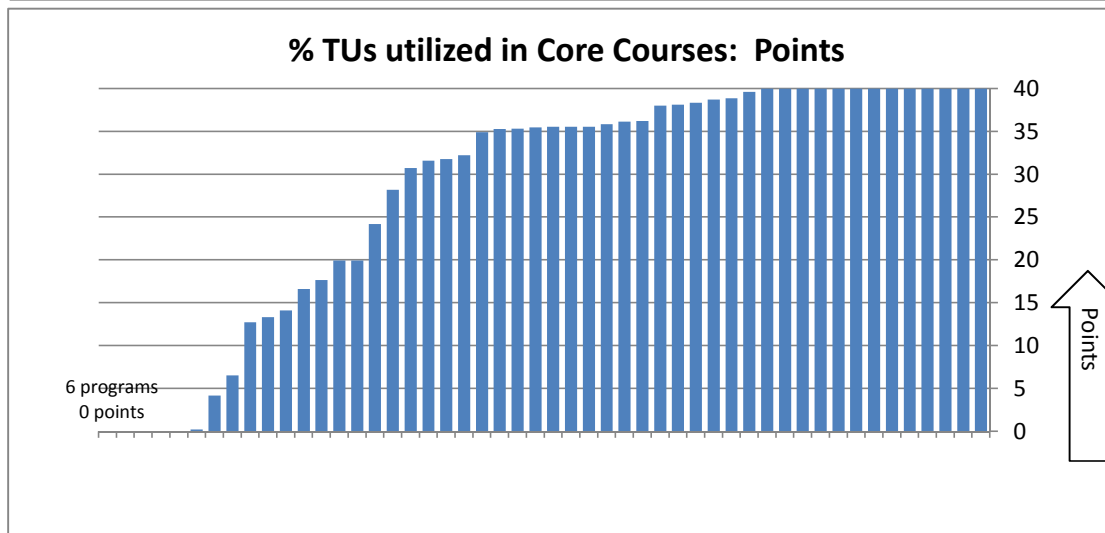
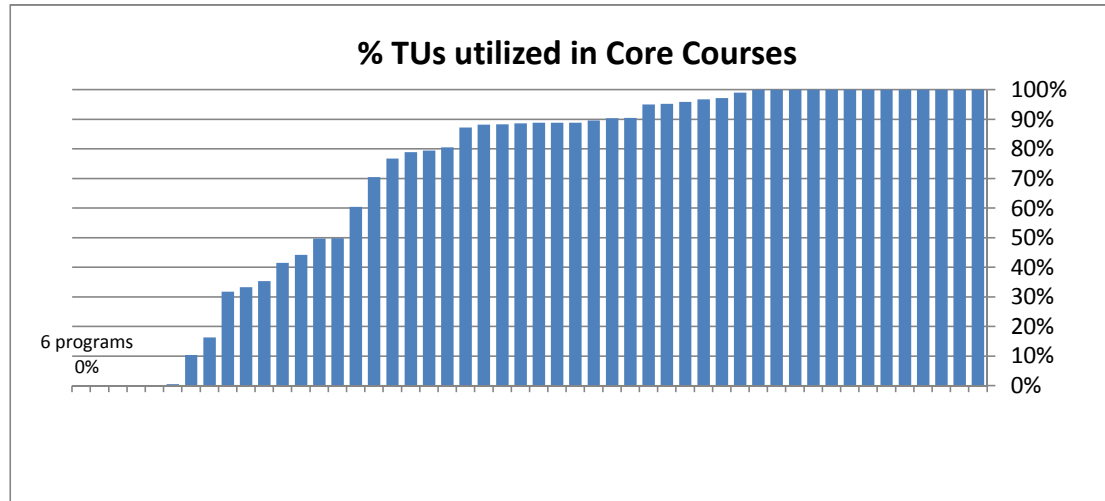
Academic years 2006-07 through 2010-11; 5 years.

Source: Datatel (section caps) XFTE reports (enrollments). Compiled by PRO.

Excludes non-credit, special studies, work experience sections, Language Lab and Engl-100L co-requisites, TA variable unit performance sections, Art 50L (Gallery viewing), all open entry (except ATH which uses section caps), with cross-listed sections combined for maximum enrollments.

NOV. 10. 2011

**Criterion 2: Core Mission**  
**Transfer and Basic Skills Programs**



Possible Points = 40

Core courses: Accepted as major prep (transfer) OR is part of a Basic Skills sequence OR is IGETC or CSU general education requirements.

Major prep courses: ASSIST, compiled by Articulation Office.

Source for IGETC or CSU: Datatel CRSE. TUs: Datatel XFAS (Faculty Assignments). Compiled by PRO.

Academic years 2009-10 through 2010-11; 2 years of data.

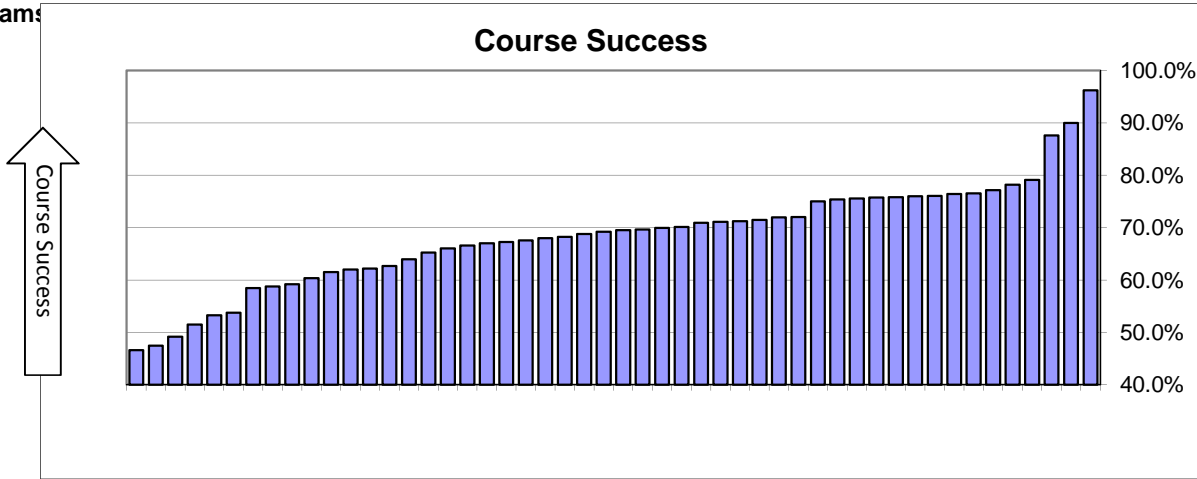
Points calculation = percentage applied to possible points.

Nov. 10. 2011

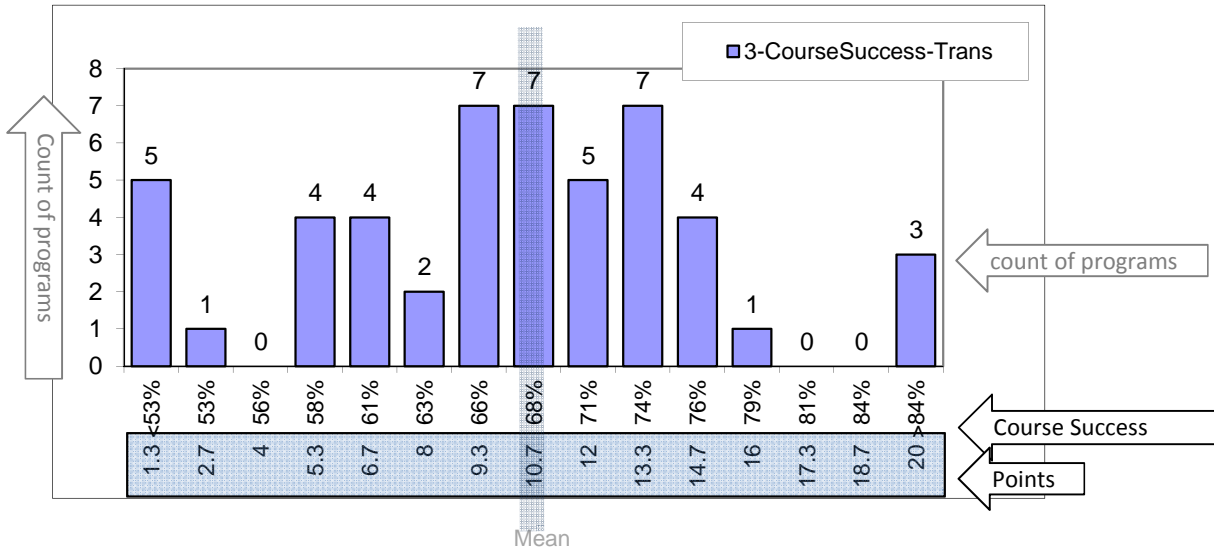
### Criterion 3: Student Success

#### Transfer and Basic Skills Programs

<b>Mean</b>	<b>68.5%</b>
<b>Median</b>	<b>69.3%</b>
Standard Deviation	10.1%
<b>Minimum</b>	<b>46.6%</b>
<b>Maximum</b>	<b>96.2%</b>
Count	50



Points score bands are established at each one-quarter standard deviation, working outward from the mean.



Possible Points = 20

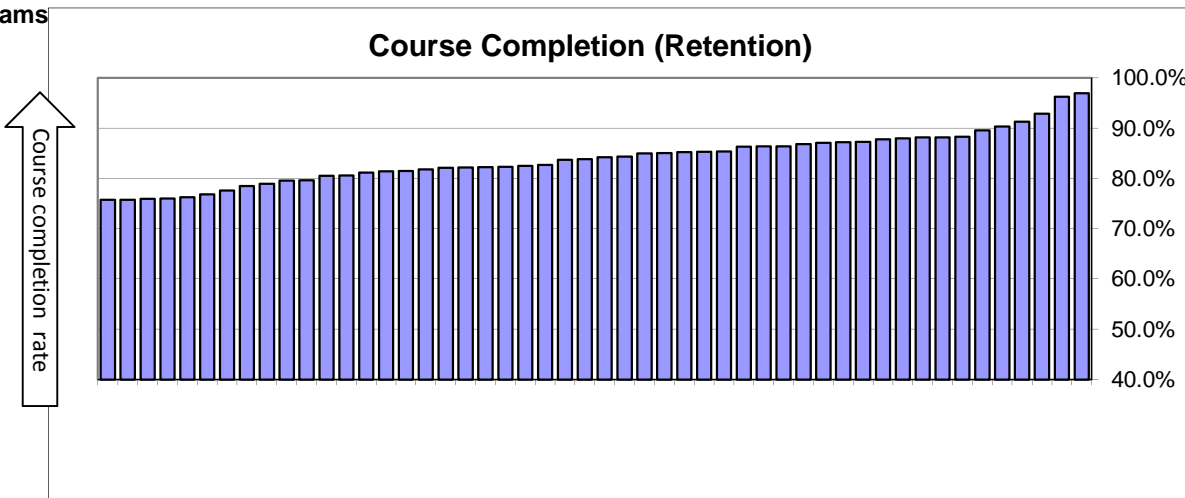
Academic years 2006-07 through 2010-11; 5 years.  
 Source: Data warehouse. Compiled by PRO.  
 Same datasets as used in Program Planning; although with all terms included.

Nov. 10. 2011

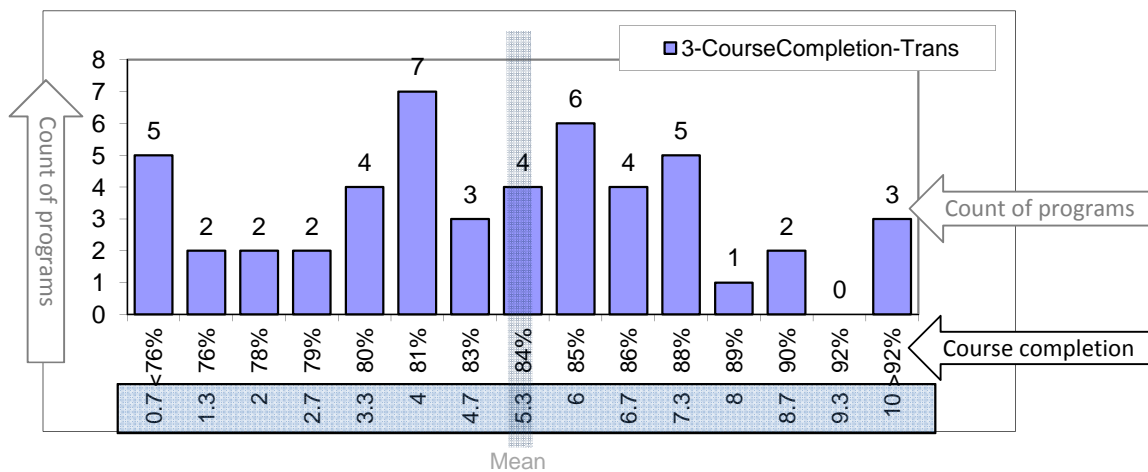
### Criterion 3: Student Success

#### Transfer and Basic Skills Programs

<b>Mean</b>	<b>84.0%</b>
<b>Median</b>	<b>84.0%</b>
Standard Deviation	5.0%
<b>Minimum</b>	<b>75.7%</b>
<b>Maximum</b>	<b>96.9%</b>
Count	50



Points score bands are established at each one-quarter standard deviation, working outward from the mean.



Possible Points = 10

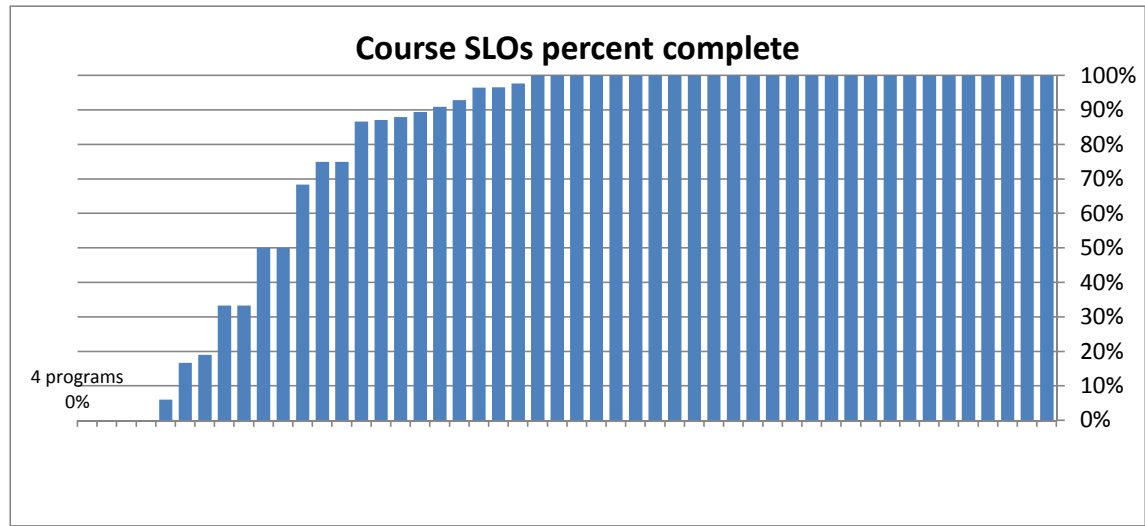
Academic years 2006-07 through 2010-11; 5 years.

Source: Data warehouse. Compiled by PRO.

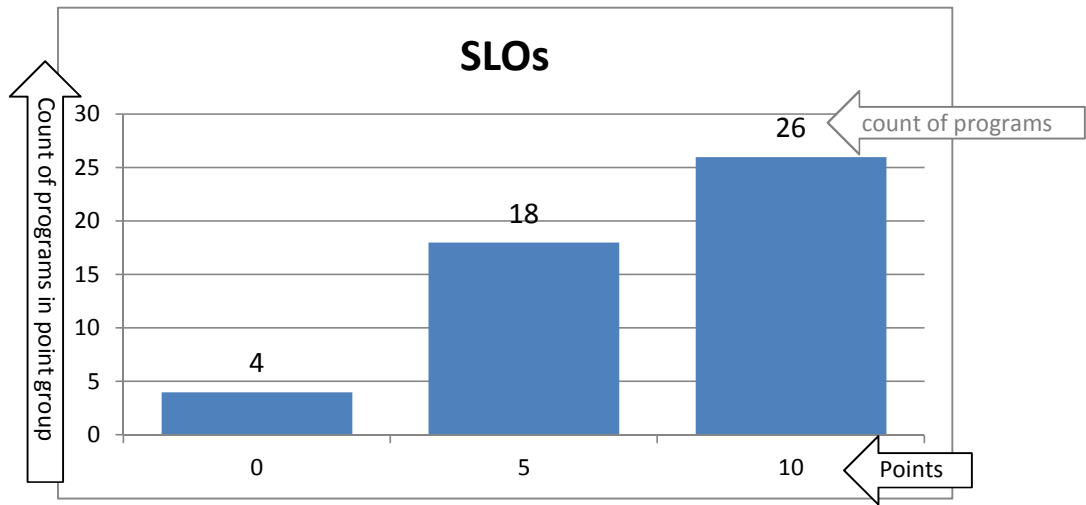
Same datasets as used in Program Planning; although with all terms included.

Nov. 10. 2011

**Criterion 3: Student Success**  
**Transfer and Basic Skills Programs**



Percent	Points
0%	0
1%	5
100%	10



Possible Points = 10

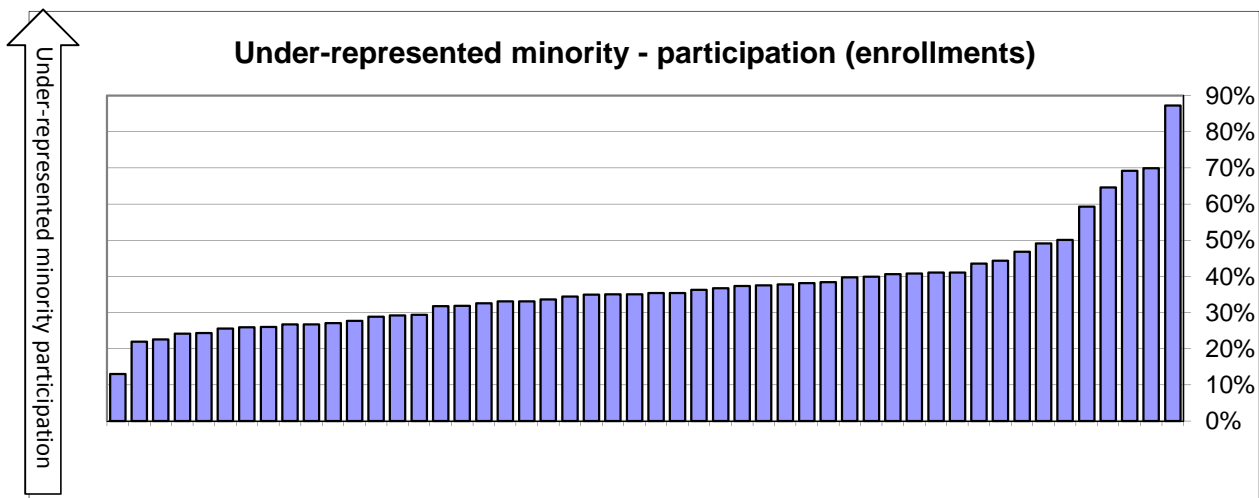
Course SLOs completed/not, prepared by the Office of Instruction.  
 Source for active courses: Datatel CRSE. Compiled by PRO.

Nov. 10. 2011

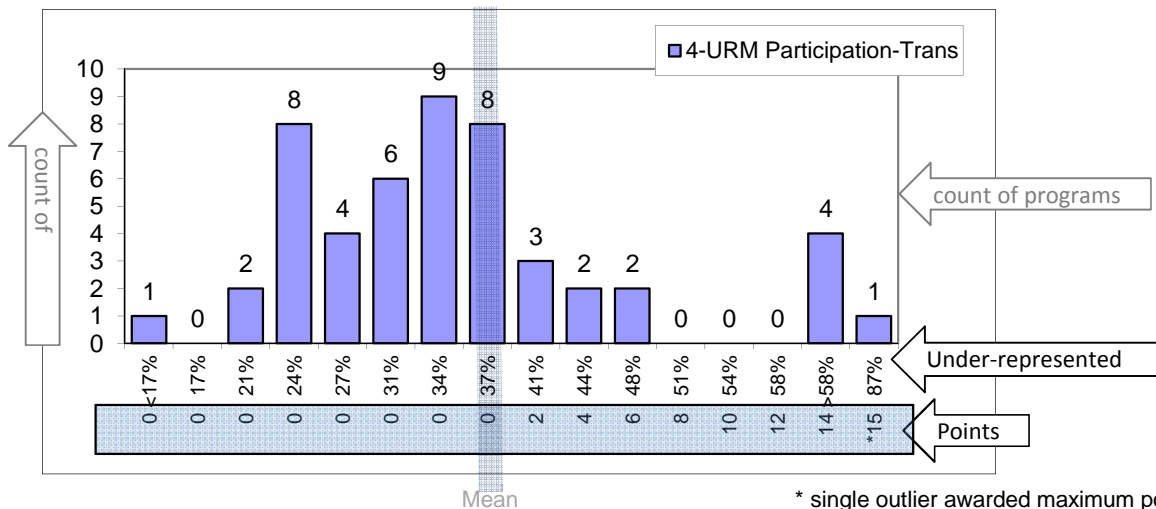
**Criterion #4: Access**

**Transfer and Basic Skills Programs**

<b>Mean</b>	<b>37.5%</b>
<b>Median</b>	<b>35.2%</b>
Standard Deviation	13.5%
<b>Minimum</b>	<b>13.0%</b>
<b>Maximum</b>	<b>87.3%</b>
Count	50



Points score bands are established at each one-quarter standard deviation, working outward from the mean.



Possible Points = 15

Academic years 2006-07 through 2010-11; 5 years.

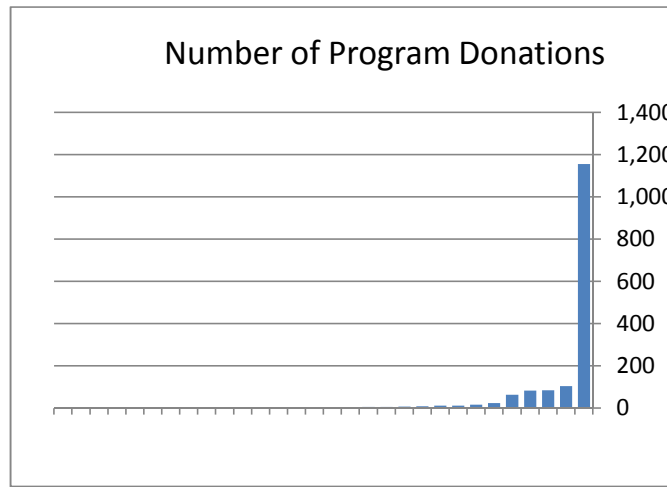
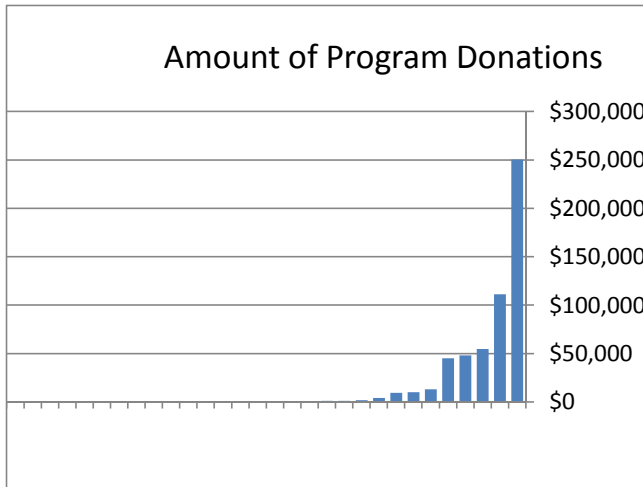
Source: Data warehouse. Compiled by PRO.

Same datasets as used in Program Planning; although with all terms included.

Under-represented includes American Indian, African American, Filipino, Hispanic/Latino, Pacific Islander, Multiple ethnicities

Nov. 10. 2011

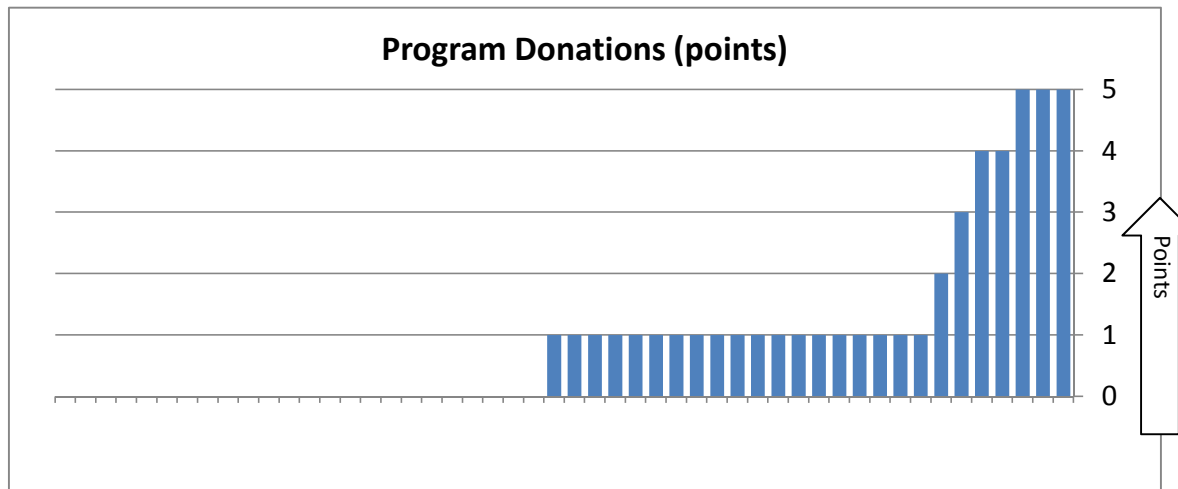
**Criterion #5: Community financial support**  
**Transfer and Basic Skills Programs**



Number	Points
0	0
1	1
25	2
50	3
75	4
100	5

Amount	Points
0	0
1	1
25,000	2
50,000	3
75,000	4
100,000	5

24 programs had no donations



Possible Points = 5

Points scores are calculated for number of donations, then for amount of donations - the final score is the maximum of the two.

Source: Cabrillo College Foundation; funds which are associated with specific department(s).

Academic years 2006-07 through 2010-11; 5 years of contributions to these funds.

When a fund is associated with multiple departments, amounts (but not the number of donors) are divided among the departments.

Nov. 10. 2011