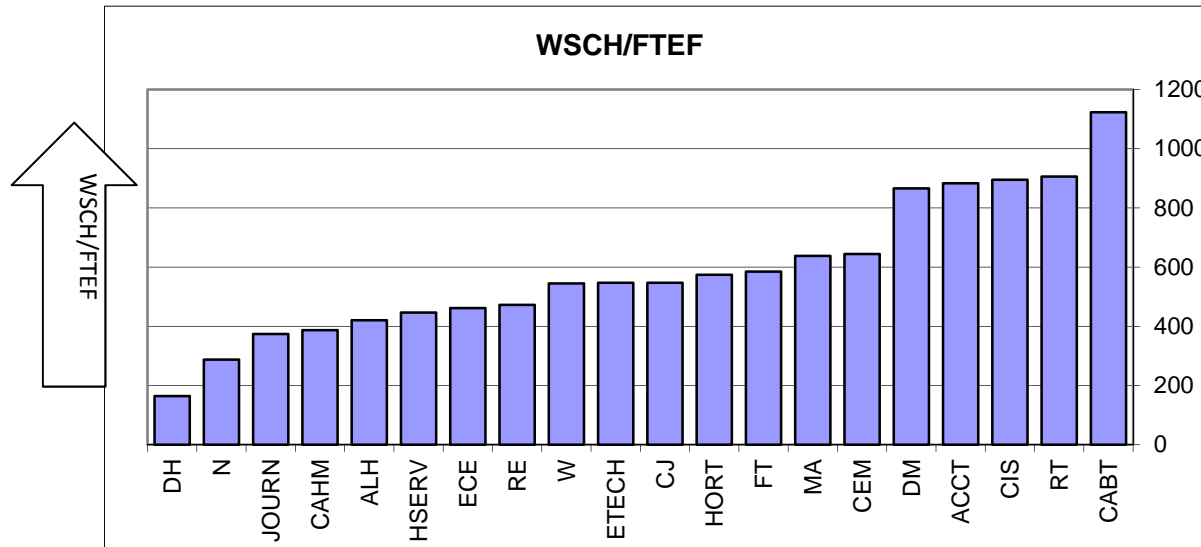
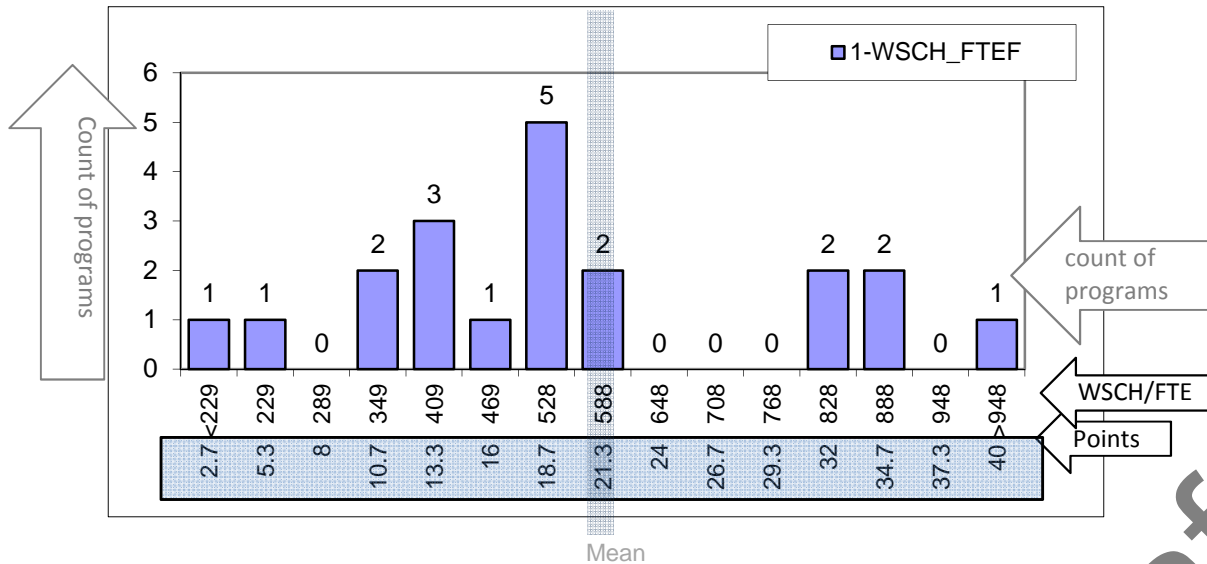


**Criterion 1: Efficiency
CTE Programs**

Mean	588.3
Median	547.0
Standard Deviation	239.6
Minimum	164.6
Maximum	1123.2
Count	20



Points score bands are established at each one-quarter standard deviation, working outward from the mean.



Possible Points = 40

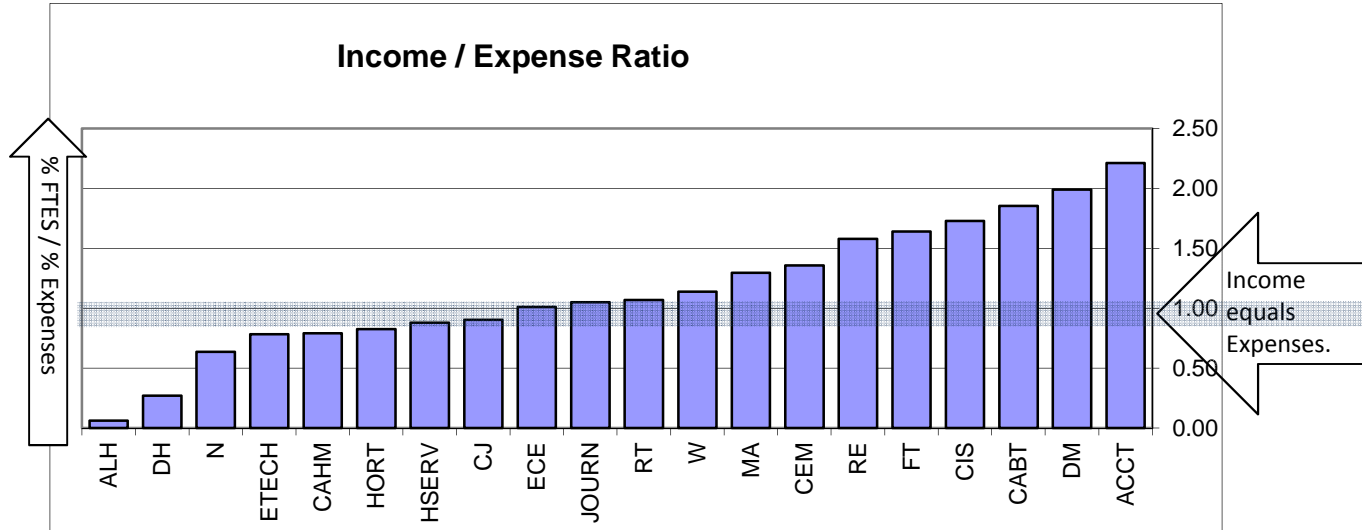
Academic years 2006-07 through 2010-11; 5 years.
Source: Datatel XFTE and XFAS (Faculty Assignments) reports. Compiled by PRO.
Same datasets as used in Program Planning; although with all terms included.

Draft-2

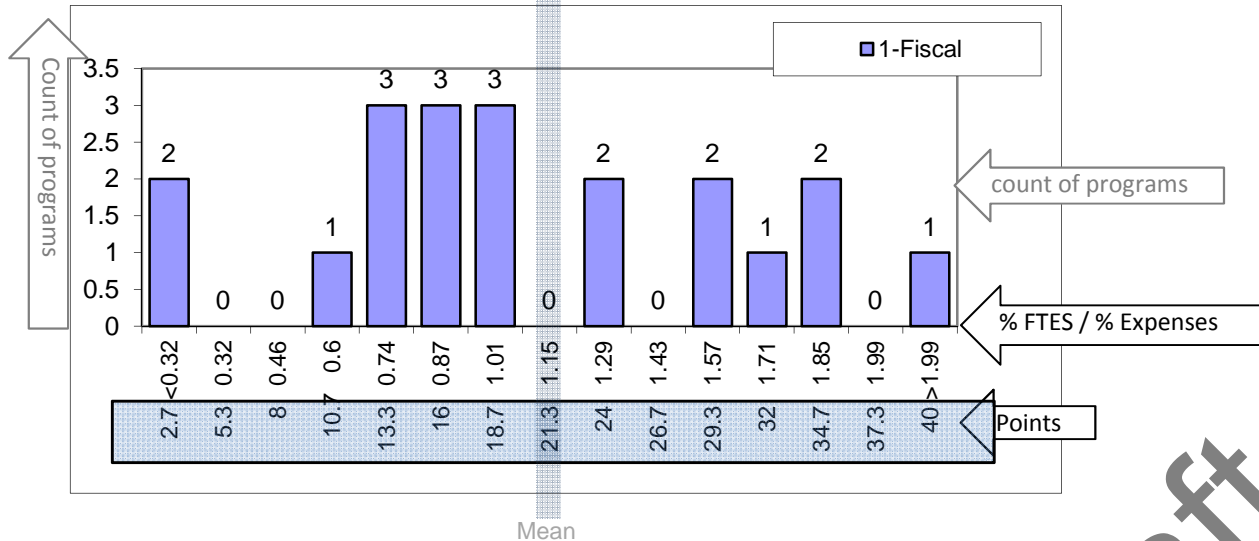
Criterion 1: Efficiency
CTE Programs

Mean	1.15
Median	1.06
Standard Deviation	0.56
Minimum	0.06
Maximum	2.21
Count	20

Total program FTES (Income) as a percent of the total college FTES.
 -- DIVIDED BY --
 Total program costs as a percent of the college instructional expenses.



Points score bands are established at each one-quarter standard deviation, working outward from the mean.



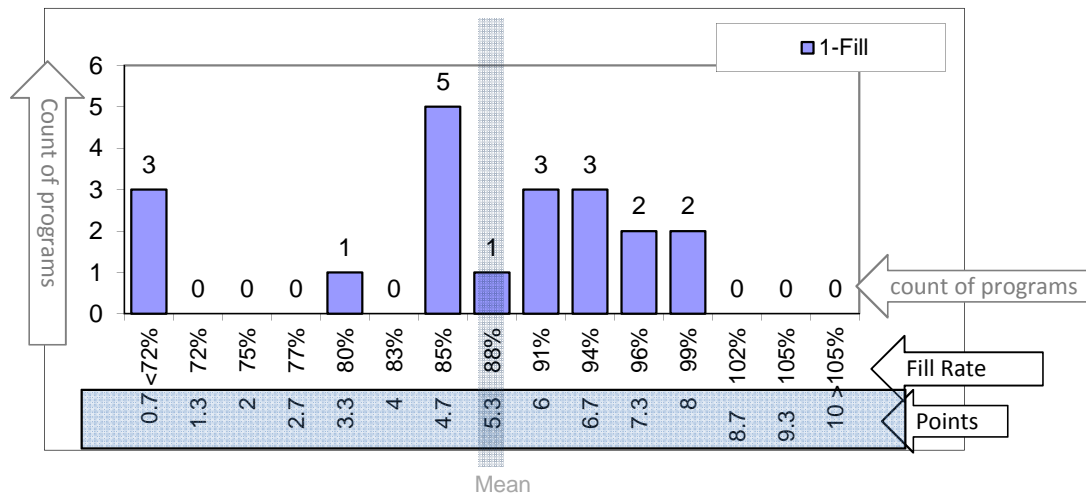
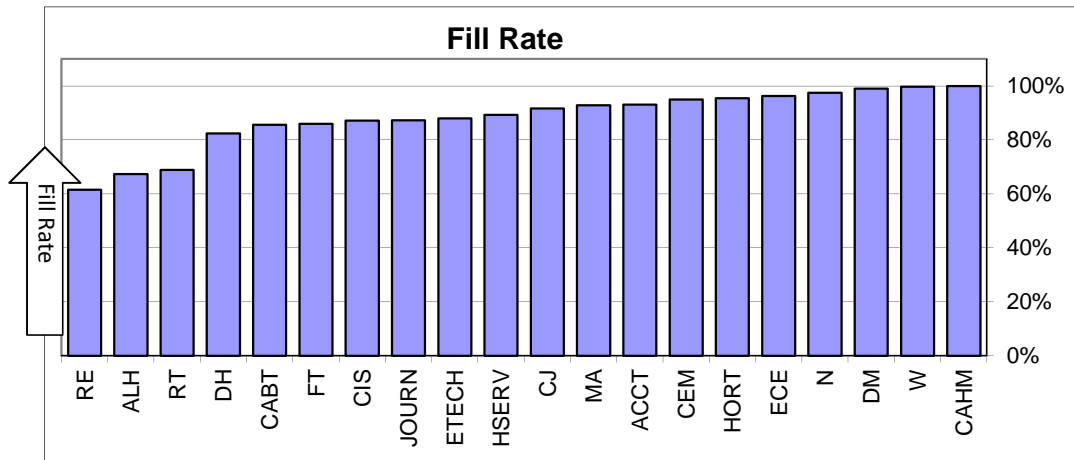
Possible Points = 40

Academic years 2006-07 through 2010-11; 5 years.
 Source: Datatel GLBA report, prepared by the Office of Instruction.
 Same datasets as used in Program Planning.

Draft-2

Criterion 1: Efficiency
CTE Programs

Mean	88.2%
Median	90.5%
Standard Deviation	10.9%
Minimum	61.5%
Maximum	99.9%
Count	20



Points score bands are established at each one-quarter standard deviation, working outward from the mean.

Possible Points = 10

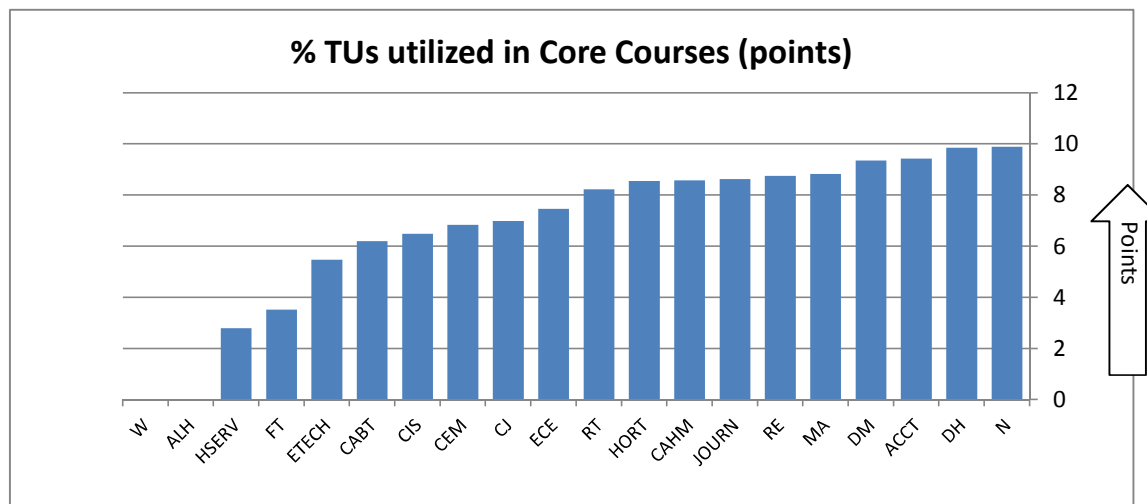
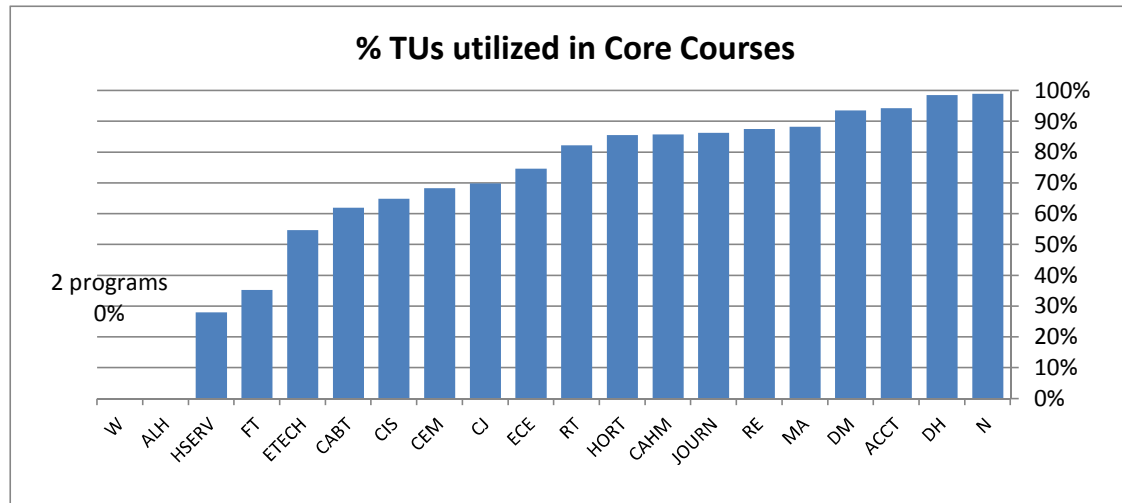
Academic years 2006-07 through 2010-11; 5 years.

Source: Datatel (section caps) XFTE reports (enrollments). Compiled by PRO.

Excludes non-credit, special studies, work experience sections, Language Lab and Engl-100L co-requisites, TA variable unit performance sections, Art 50L (Gallery viewing), all open entry (except ATH which uses section caps), with cross-listed sections combined for maximum enrollments.

Draft-2

Criterion 2: Core Mission
CTE Programs



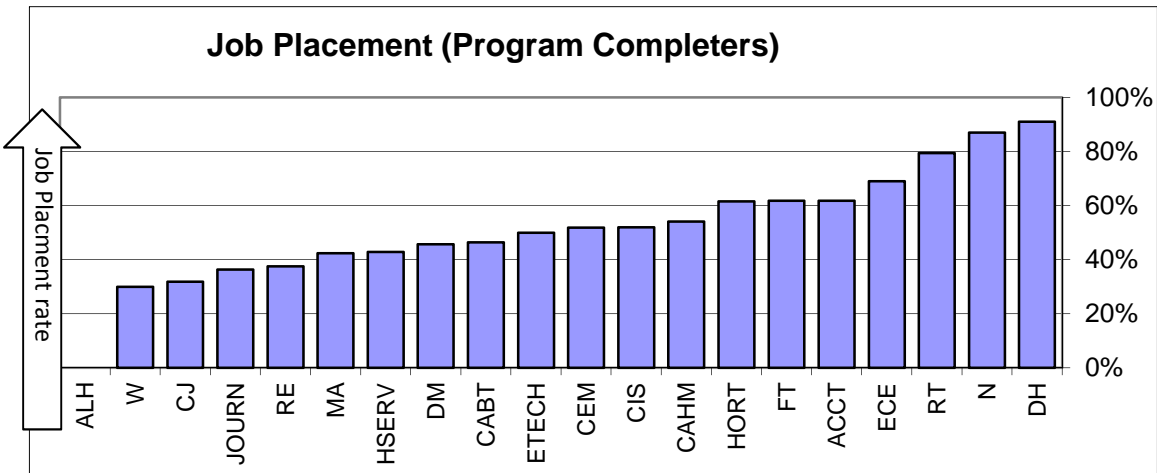
Possible Points = 10

Core courses: required for the A.S. degree or Certificates of Achievement
 Core Courses: Curricunet, compiled by Office of Instruction.
 Source for TUs: Datatel XFAS (Faculty Assignments). Compiled by PRO.
 Academic years 2009-10 through 2010-11; 2 years of data.
 Points calculation = percentage applied to possible points.

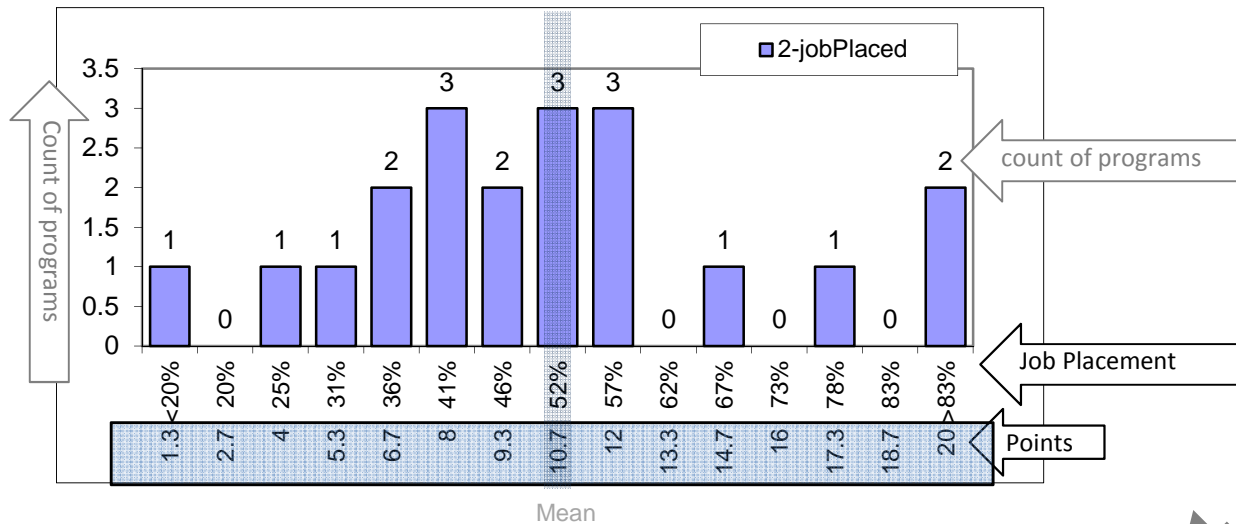
Draft-2

Criterion 2: Core Mission
CTE Programs

Mean	51.6%
Median	50.9%
Standard Deviation	21.0%
Minimum	0.0%
Maximum	91.1%
Count	20



Points score bands are established at each one-quarter standard deviation, working outward from the mean.



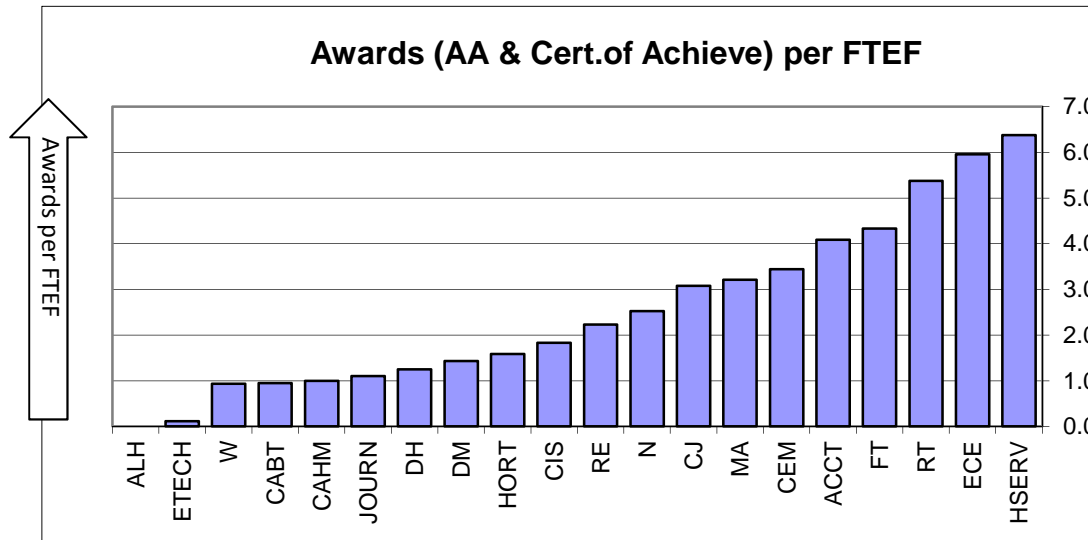
Possible Points = 20

Academic years 2006-07 through 2010-11; 5 years.
 Source: CEED Completer/Leaver survey.
 Same datasets as used in Program Planning.

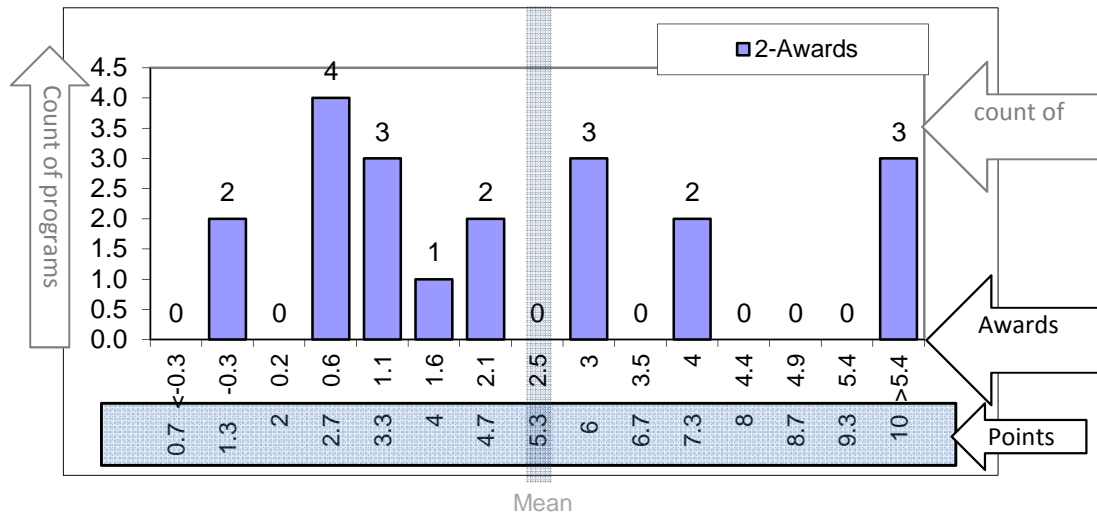
Draft-2

**Criterion 2: Core Mission
CTE Programs**

Mean	2.54
Median	2.03
Standard Deviation	1.89
Minimum	0.00
Maximum	6.38
Count	20



Points score bands are established at each one-quarter standard deviation, working outward from the mean.



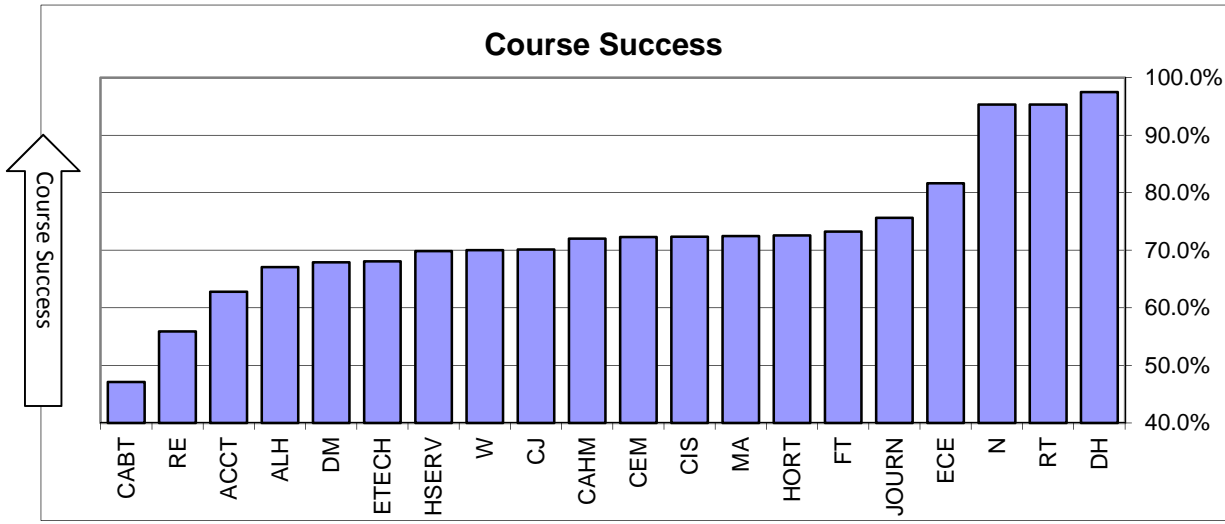
Possible Points = 10

Academic years 2006-07 through 2010-11; 5 years.
Source: Datatel Acad.Progs. and XFAS (Faculty Assignments) reports. Compiled by PRO.
Same datasets as used in Program Planning.

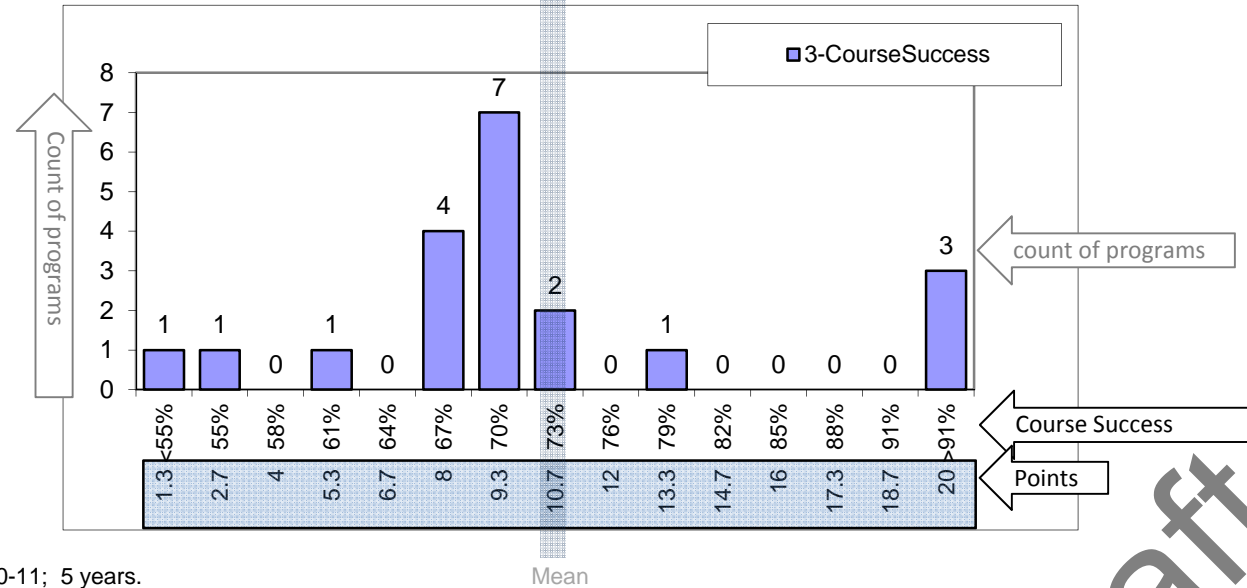
Draft-2

Criterion 3: Student Success
CTE Programs

Mean	73.0%
Median	72.2%
Standard Deviation	12.3%
Minimum	47.1%
Maximum	97.5%
Count	20



Points score bands are established at each one-quarter standard deviation, working outward from the mean.



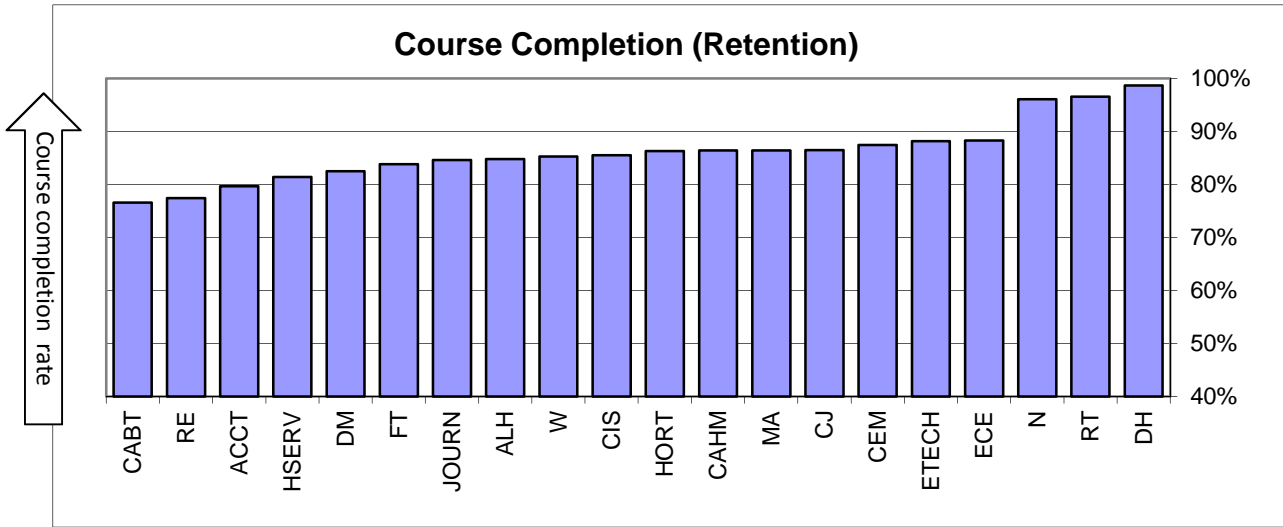
Possible Points = 20

Academic years 2006-07 through 2010-11; 5 years.
 Source: Data warehouse. Compiled by PRO.
 Same datasets as used in Program Planning; although with all terms included.

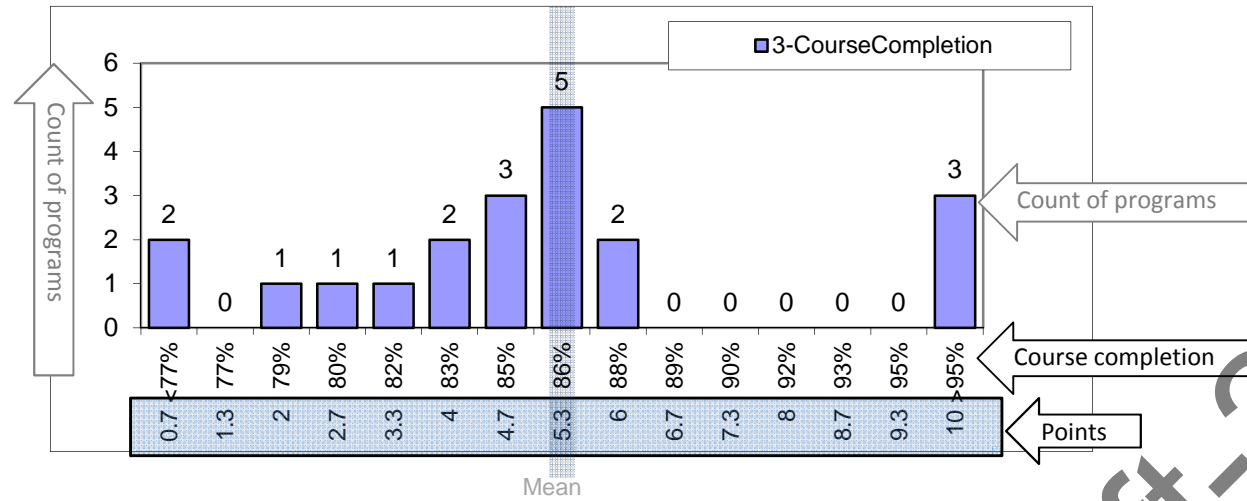
Draft-2

Criterion 3: Student Success
CTE Programs

Mean	86.1%
Median	85.9%
Standard Deviation	5.8%
Minimum	76.6%
Maximum	98.7%
Count	20



Points score bands are established at each one-quarter standard deviation, working outward from the mean.

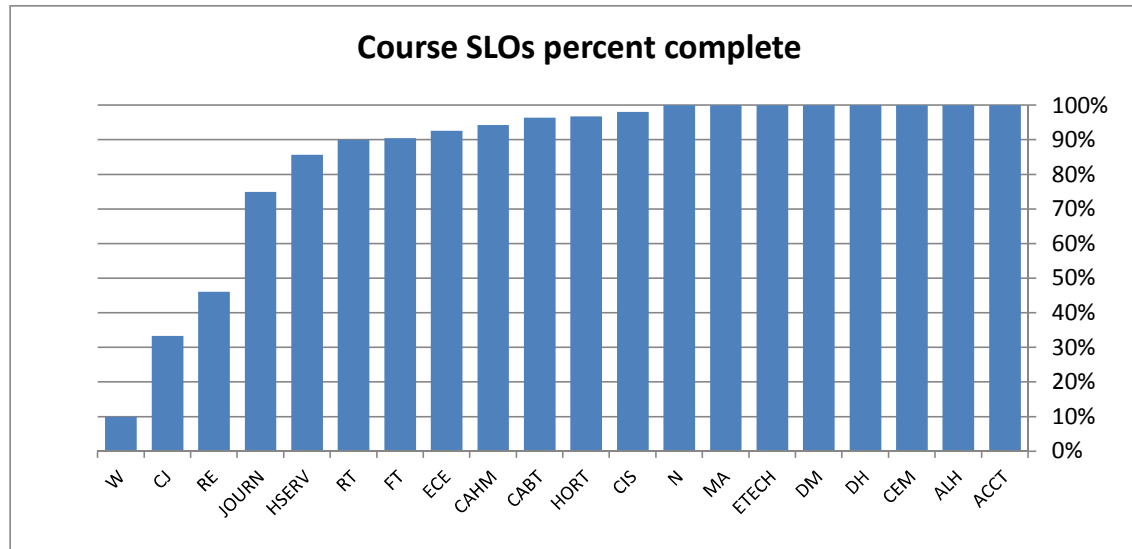


Possible Points = 10

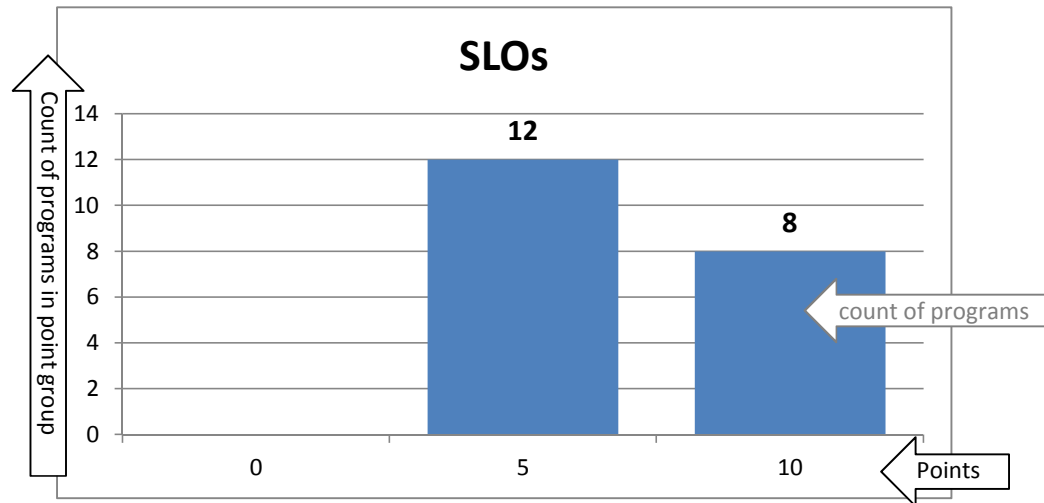
Academic years 2006-07 through 2010-11; 5 years.
 Source: Data warehouse. Compiled by PRO.
 Same datasets as used in Program Planning; although with all terms included.

Draft-2

Criterion 3: Student Success
CTE Programs



Percent	Points
0%	0
1%	5
100%	10



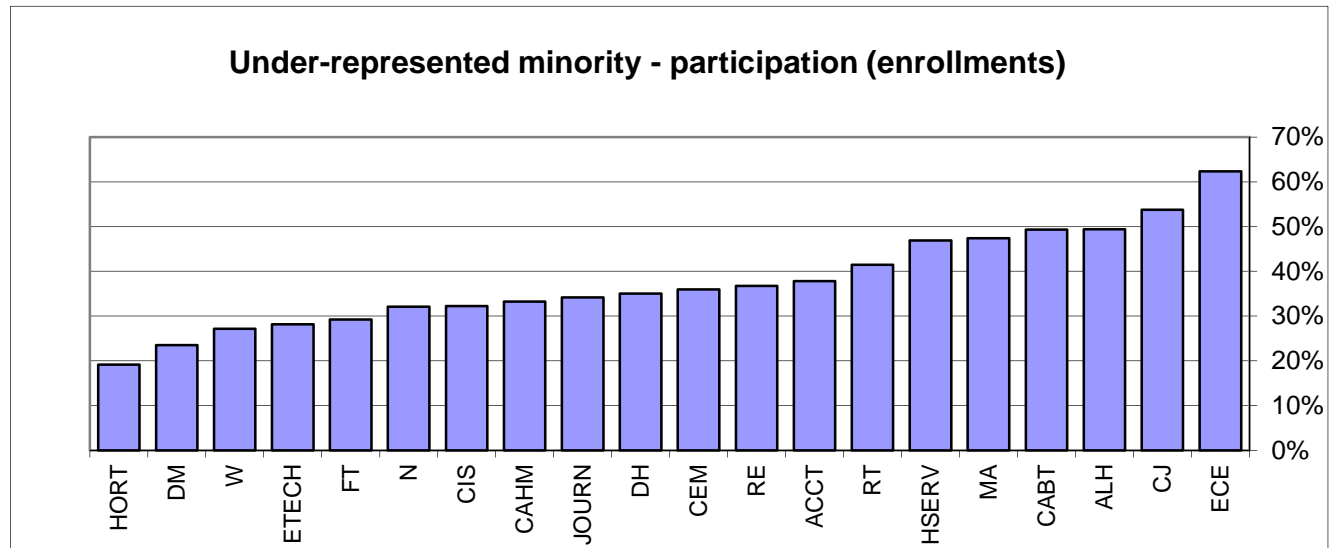
Possible Points = 10

Course SLOs completed/not, prepared by the Office of Instruction.
 Source for active courses: Datatel CRSE. Compiled by PRO.

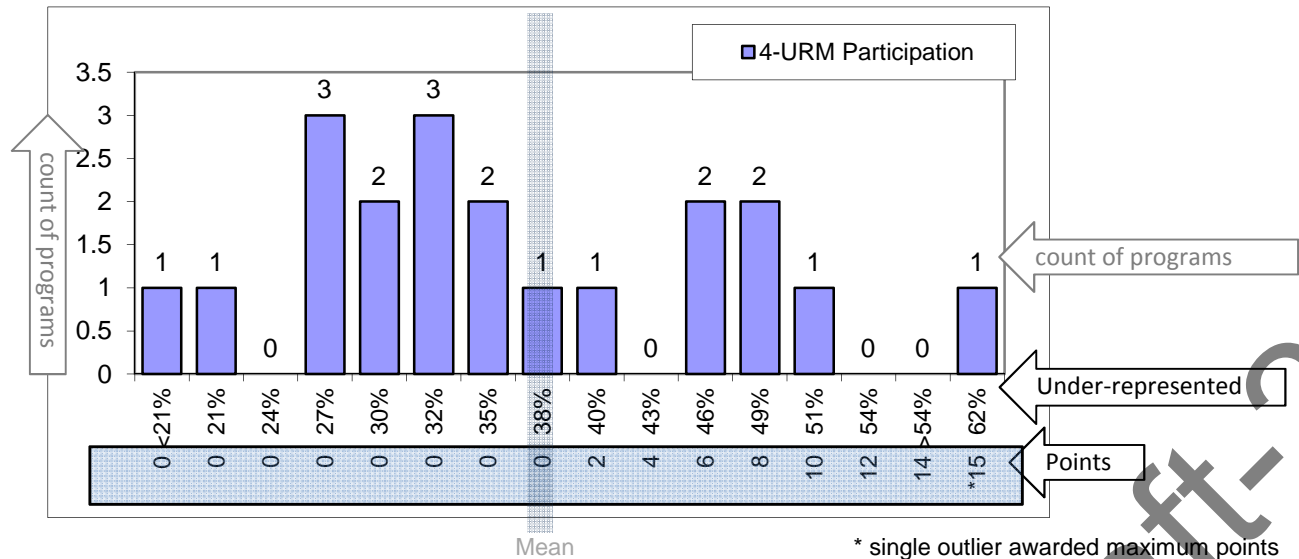
Draft-2

Criterion #4: Access
CTE Programs

Mean	37.7%
Median	35.5%
Standard Deviation	10.9%
Minimum	19.1%
Maximum	62.3%
Count	20



Points score bands are established at each one-quarter standard deviation, working outward from the mean.



Possible Points = 15

Academic years 2006-07 through 2010-11; 5 years.

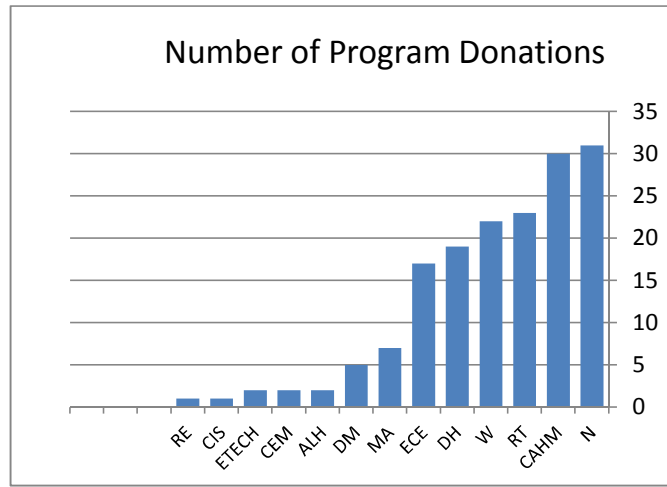
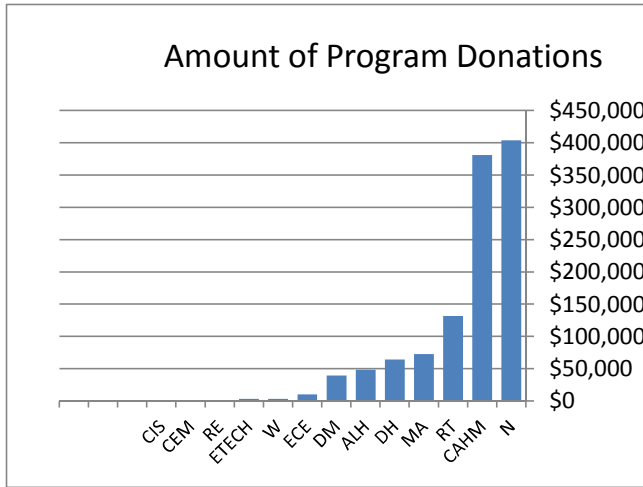
Source: Data warehouse. Compiled by PRO.

Same datasets as used in Program Planning; although with all terms included.

Under-represented includes American Indian, African American, Filipino, Hispanic/Latino, Pacific Islander, Multiple ethnicities

Draft-2

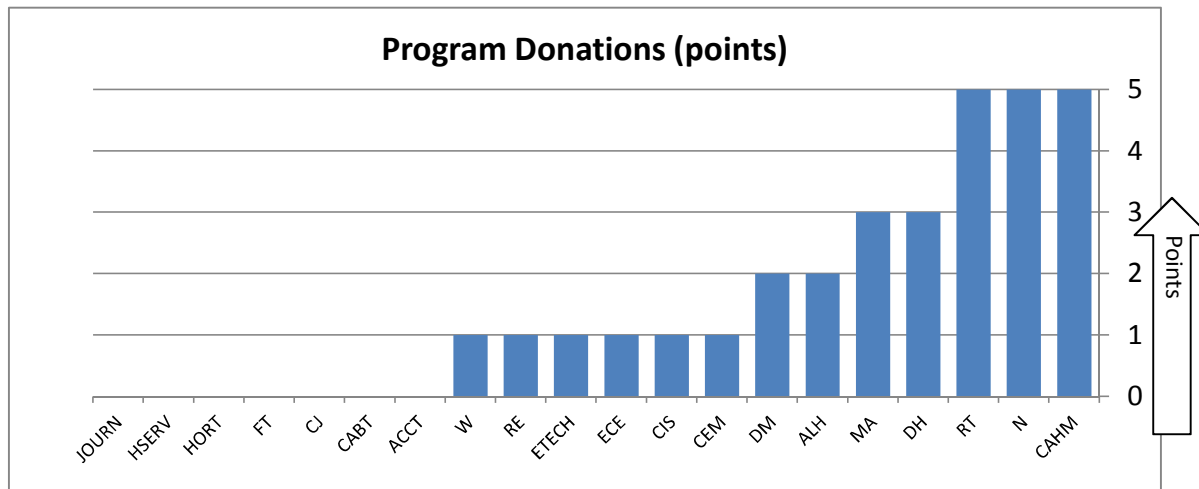
Criterion #5: Community financial support
CTE Programs



7 programs had no donations

Number	Points
0	0
1	1
25	2
50	3
75	4
100	5

Amount	Points
\$0	0
\$1	1
\$25,000	2
\$50,000	3
\$75,000	4
\$100,000	5



Possible Points = 5

Points scores are calculated for number of donations, then for amount of donations - the final score is the maximum of the two.

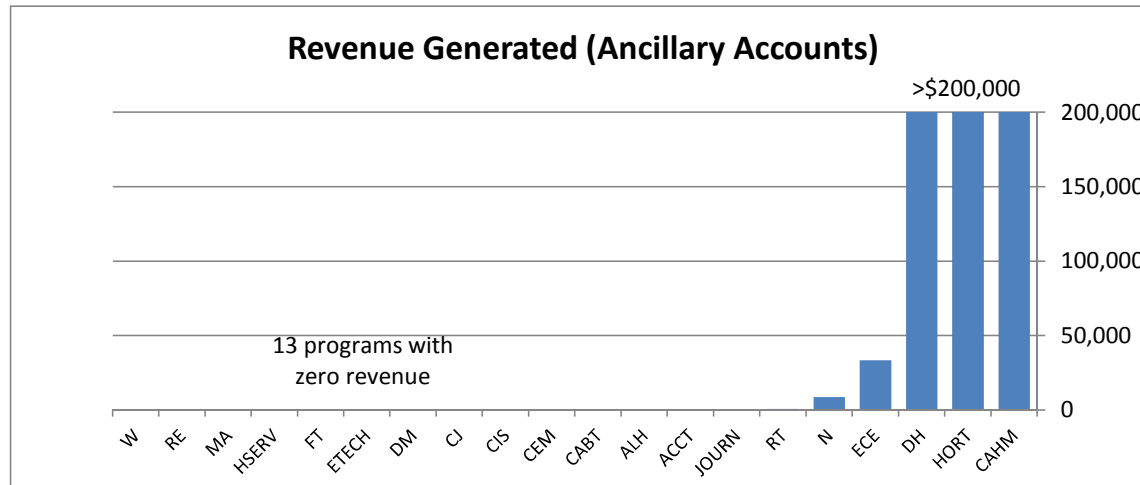
Source: Cabrillo College Foundation; funds which are associated with specific department(s).

Academic years 2006-07 through 2010-11; 5 years of contributions to these funds.

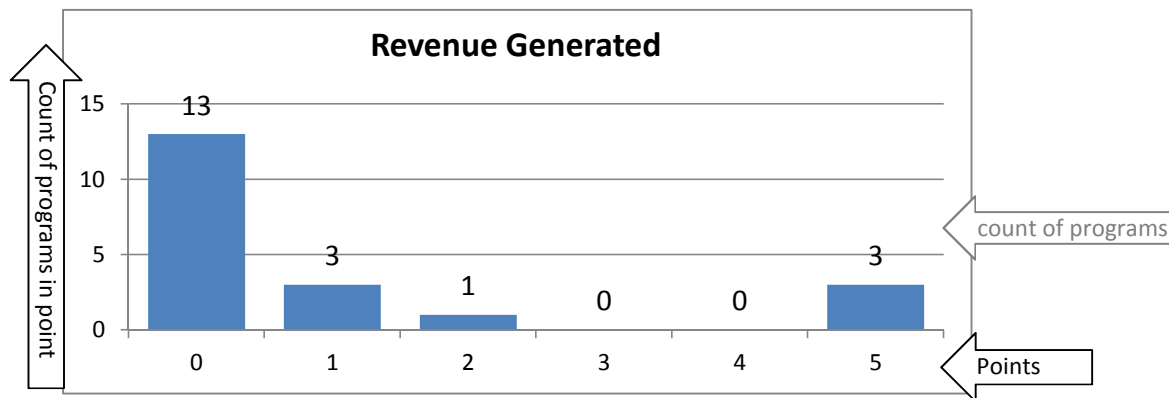
When a fund is associated with multiple departments, amounts (but not the number of donors) are divided among the departments.

Draft-2

Criterion #5: Community financial support
CTE Programs



Amount	Points
\$ -	0
\$ 1	1
\$ 25,000	2
\$ 50,000	3
\$ 75,000	4
\$ 100,000	5



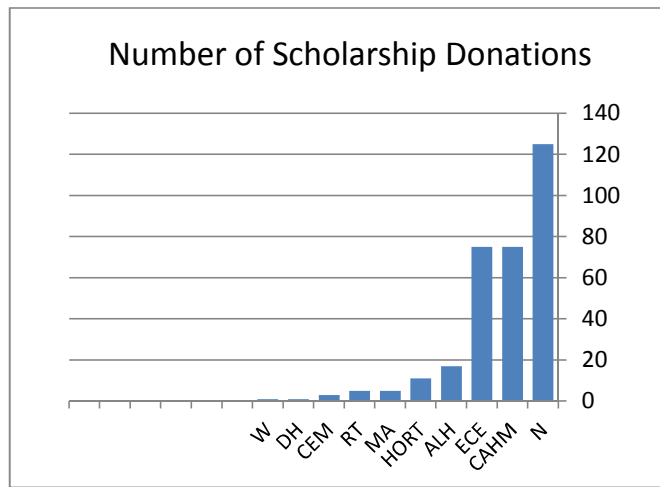
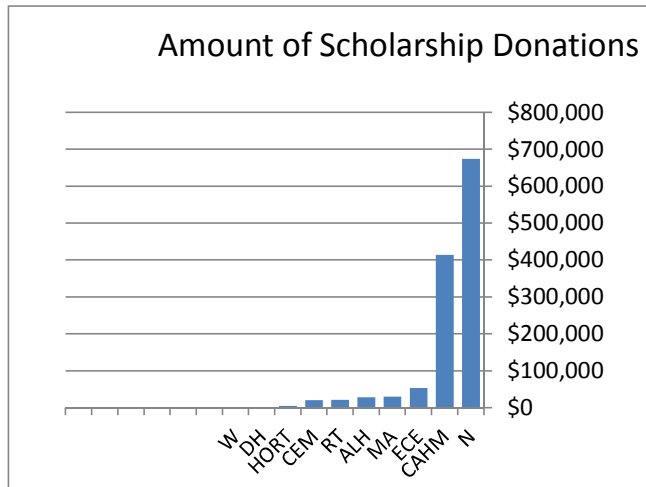
Possible Points = 5

Source: Business Office. Trust & Agency Fund 79 (ancillary) funds associated with department cost center. Academic years 2006-07 through 2010-11.

The three departments that operate business, CAHM, DM and HORT, are each awarded maximum points.

Draft-2

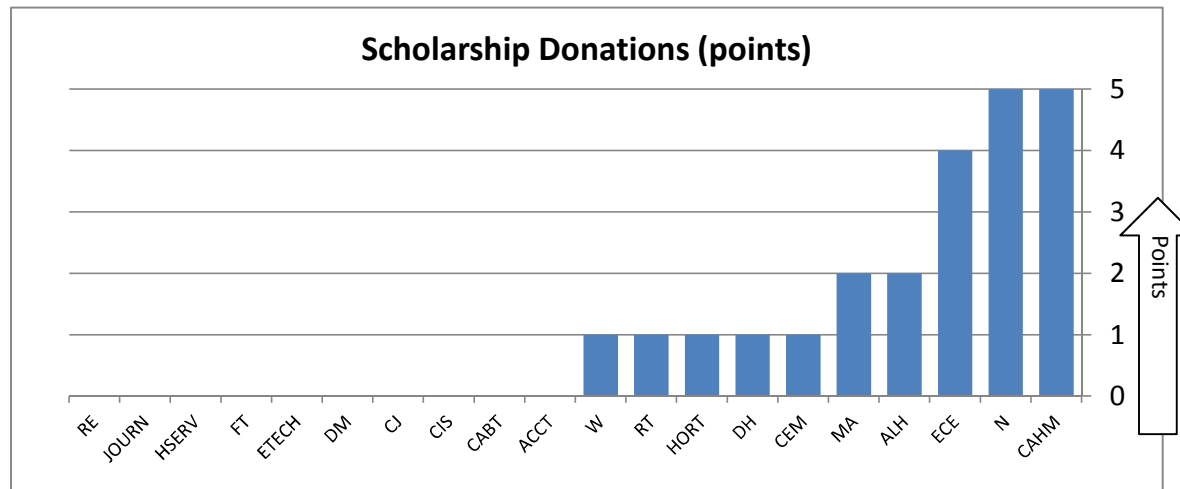
Criterion #5: Community financial support
CTE Programs



10 programs had no donations

Number	Points
0	0
1	1
25	2
50	3
75	4
100	5

Amount	Points
\$0	0
\$1	1
\$25,000	2
\$50,000	3
\$75,000	4
\$100,000	5



Possible Points = 5

Points scores are calculated for number of donations, then for amount of donations - the final score is the maximum of the two.

Source: Cabrillo College Foundation; funds which are associated with specific department(s).

Academic years 2006-07 through 2010-11; 5 years of contributions to these funds.

When a fund is associated with multiple departments, amounts (but not the number of donors) are divided among the departments.

Draft-2