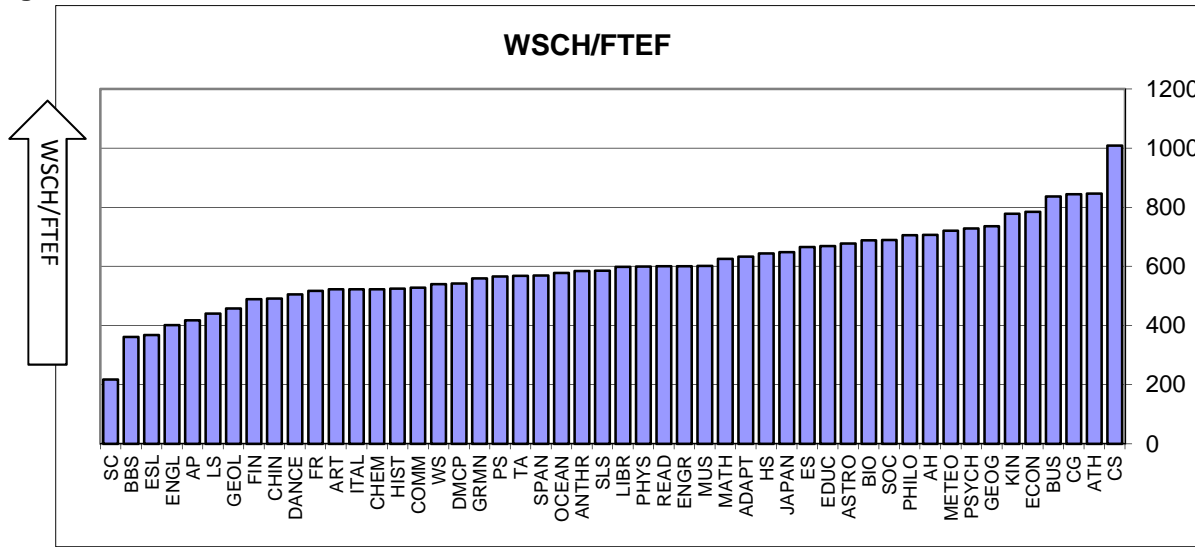
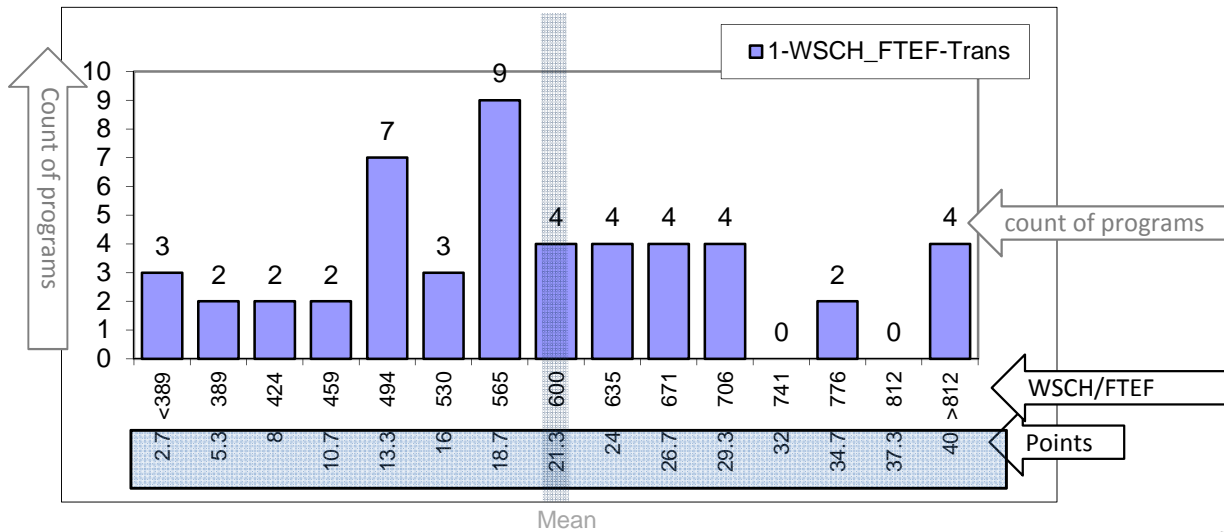


Criterion 1: Efficiency
Transfer and Basic Skills Programs

Mean	600.2
Median	592.1
Standard Deviation	141.0
Minimum	217.3
Maximum	1009.0
Count	50



Points score bands are established at each one-quarter standard deviation, working outward from the mean.



Possible Points = 40

Academic years 2006-07 through 2010-11; 5 years.
 Source: Datatel XFTE and XFAS (Faculty Assignments) reports. Compiled by PRO.
 Same datasets as used in Program Planning; although with all terms included.

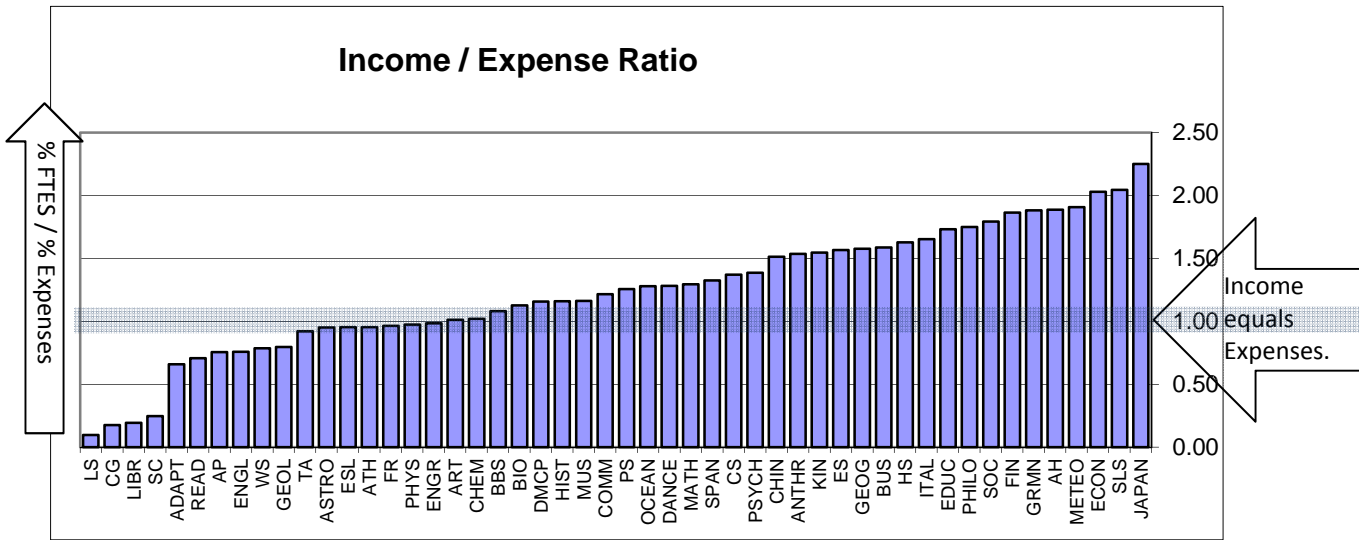
DRAFT

Criterion 1: Efficiency

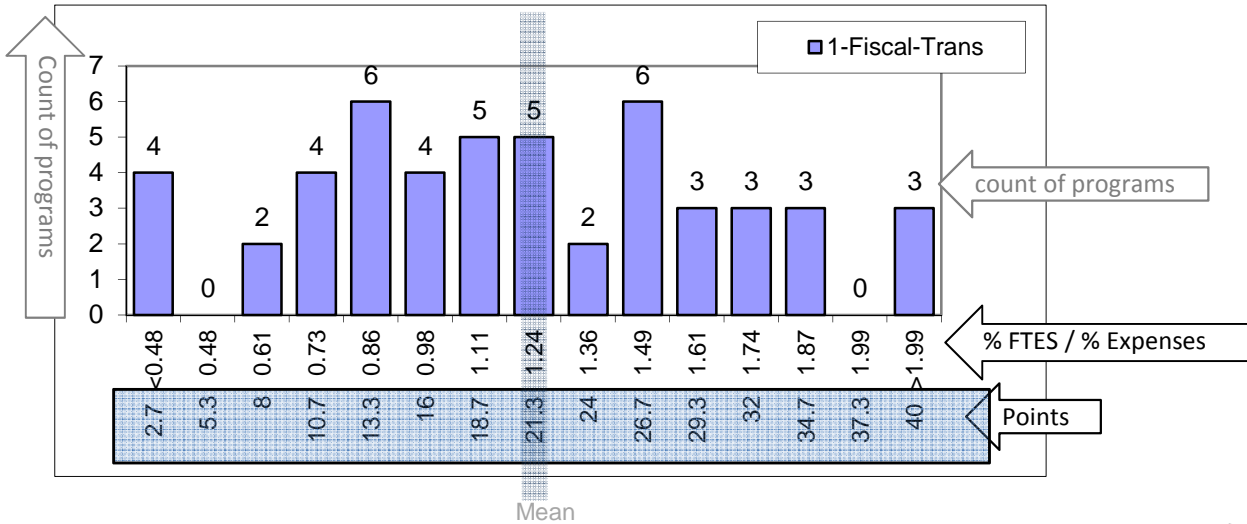
Transfer and Basic Skills Programs

Mean	1.24
Median	1.24
Standard Deviation	0.50
Minimum	0.10
Maximum	2.25
Count	50

Total program FTES (Income) as a percent of the total college FTES.
 -- DIVIDED BY --
 Total program costs as a percent of the college instructional expenses.



Points score bands are established at each one-quarter standard deviation, working outward from the mean.



Possible Points = 40

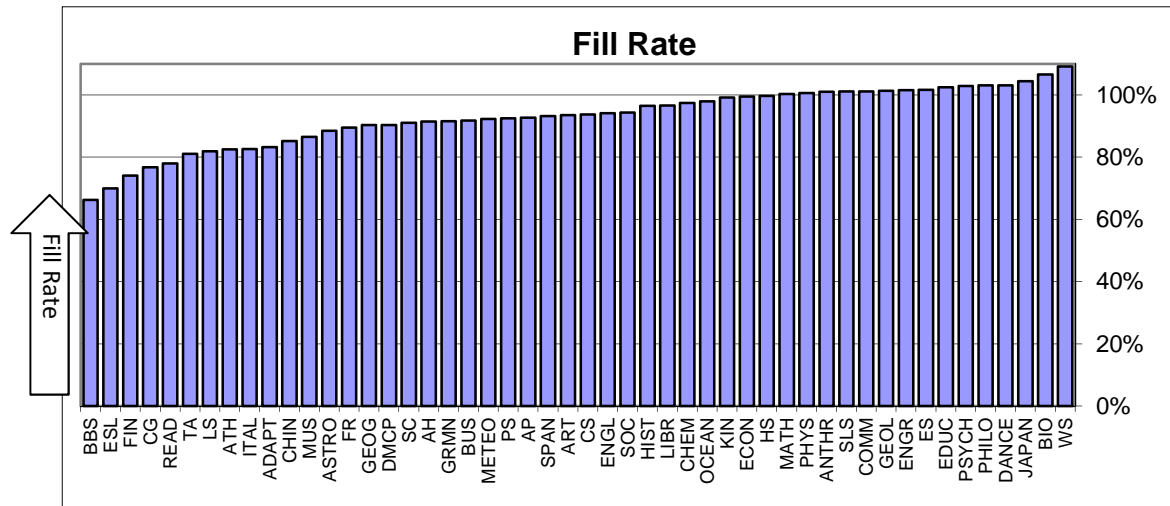
Academic years 2006-07 through 2010-11; 5 years.
 Source: Datatel GLBA report, prepared by the Office of Instruction.
 Same datasets as used in Program Planning.

DRAFT

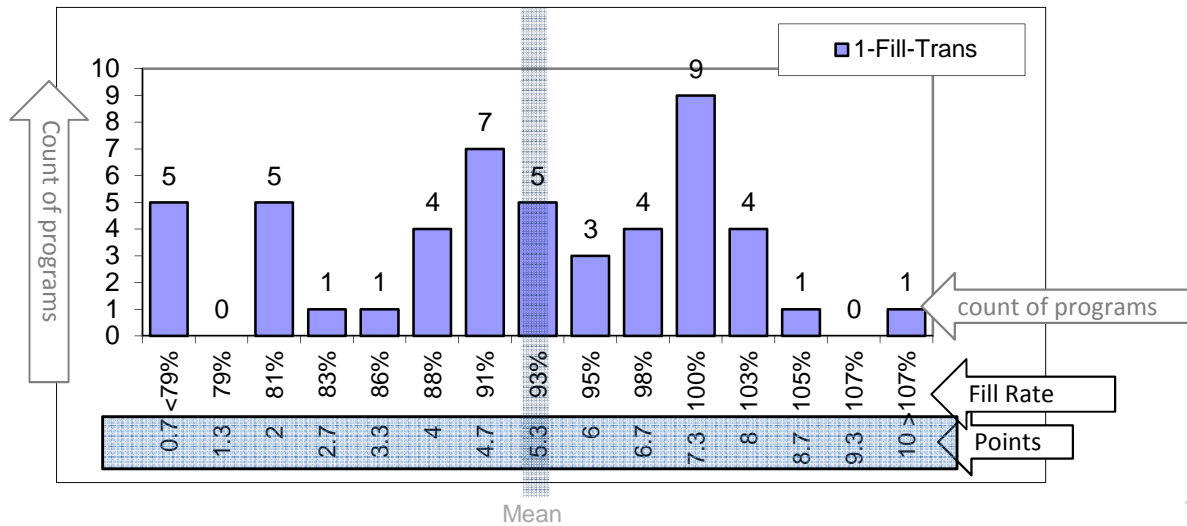
Criterion 1: Efficiency

Transfer and Basic Skills Programs

Mean	92.9%
Median	93.6%
Standard Deviation	9.6%
Minimum	66.3%
Maximum	109.2%
Count	50



Points score bands are established at each one-quarter standard deviation, working outward from the mean.



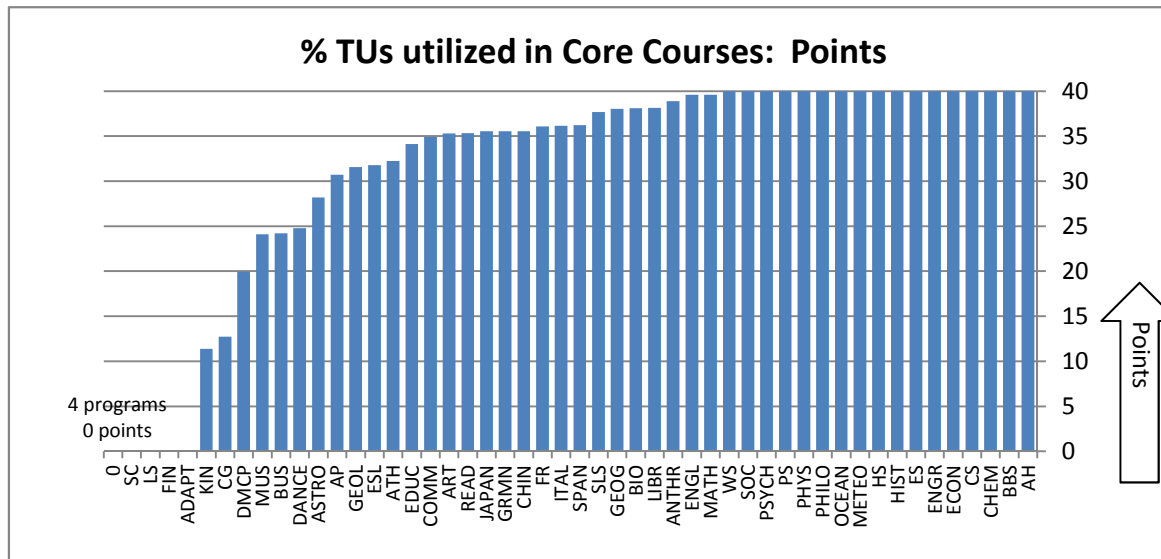
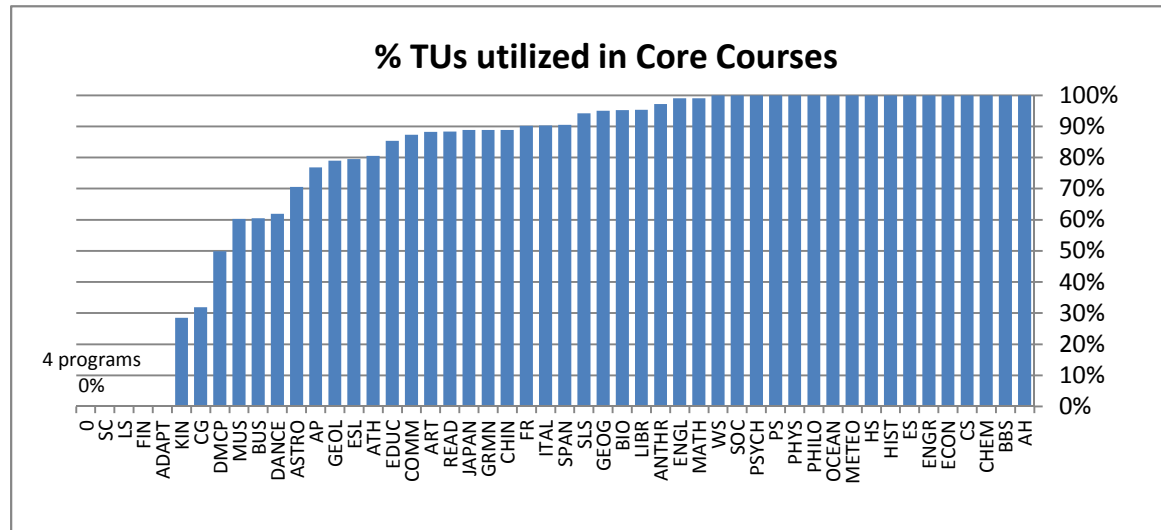
Possible Points = 10

Academic years 2006-07 through 2010-11; 5 years.

Source: Datatel (section caps) XFTE reports (enrollments). Compiled by PRO.

Excludes non-credit, special studies, work experience sections, Language Lab and Engl-100L co-requisites, TA variable unit performance sections, Art 50L (Gallery viewing), all open entry (except ATH which uses section caps), with cross-listed sections combined for maximum enrollments.

Criterion 2: Core Mission
Transfer and Basic Skills Programs



Possible Points = 40

Core courses: Accepted as major prep (transfer) OR is part of a Basic Skills sequence OR is IGETC or CSU general education requirements.

Major prep courses: ASSIST, compiled by Articulation Office.

Source for IGETC or CSU: Datatel CRSE. TUs: Datatel XFAS (Faculty Assignments). Compiled by PRO.

Academic years 2009-10 through 2010-11; 2 years of data.

Points calculation = percentage applied to possible points.

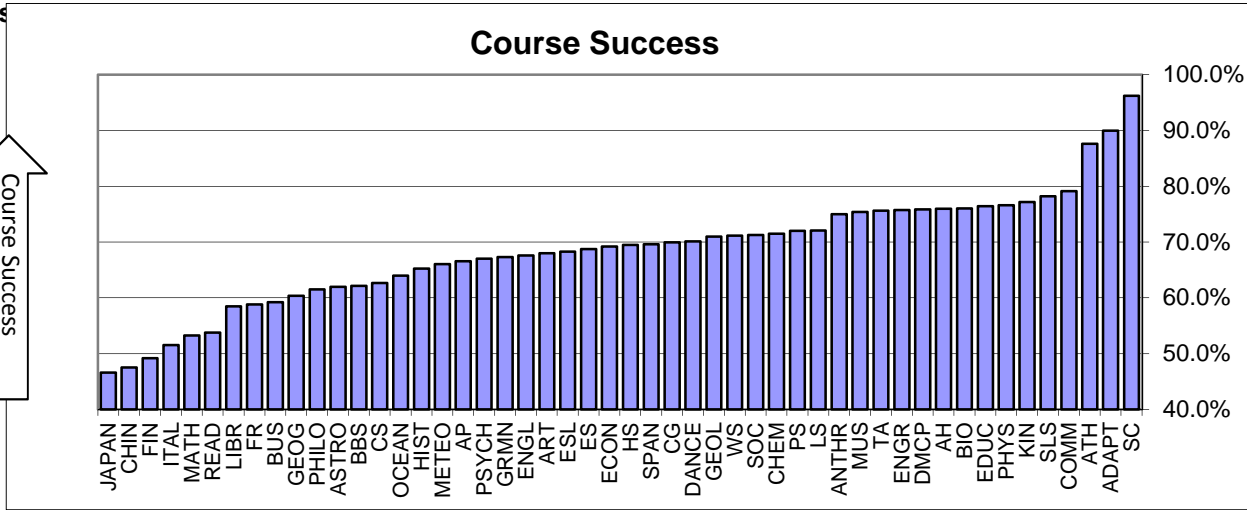
DRAFT

Criterion 3: Student Success

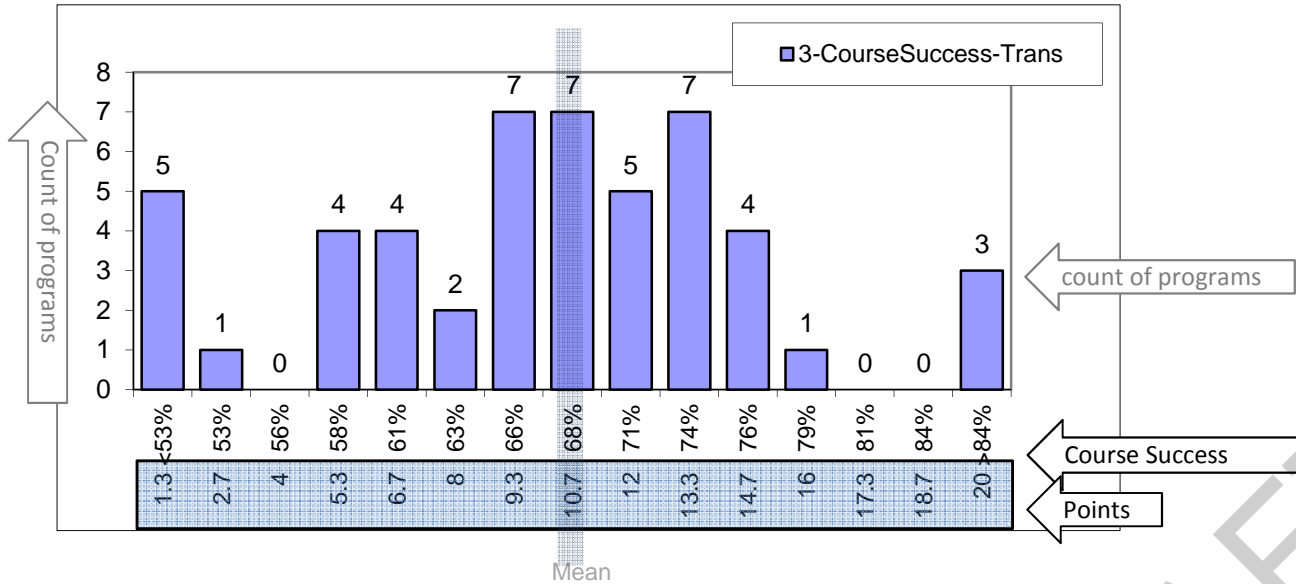
Transfer and Basic Skills Programs

Mean	68.5%
Median	69.3%
Standard Deviation	10.1%
Minimum	46.6%
Maximum	96.2%
Count	50

Course Success



Points score bands are established at each one-quarter standard deviation, working outward from the mean.



Possible Points = 20

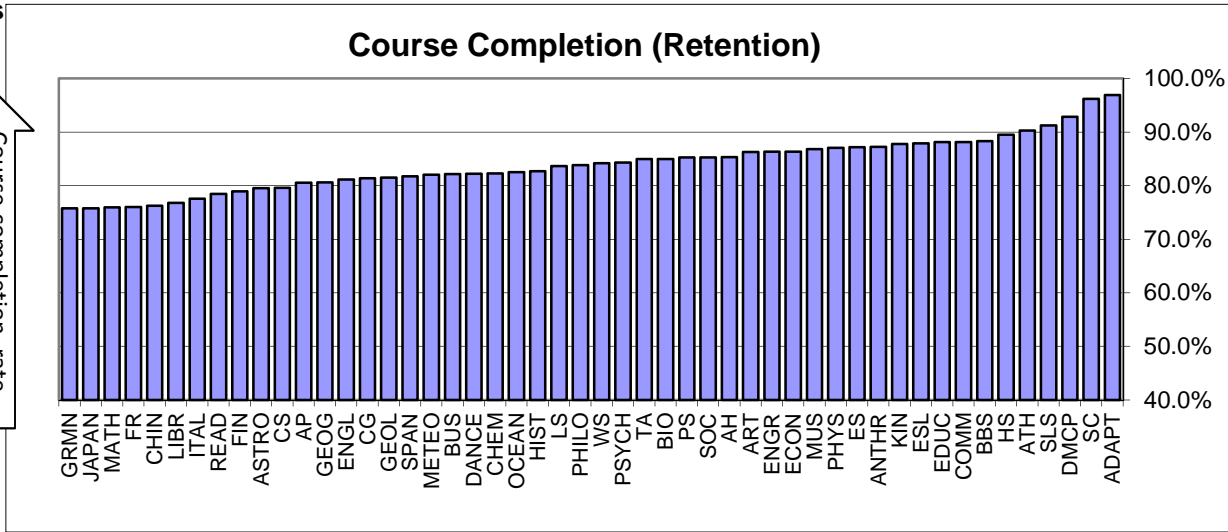
Academic years 2006-07 through 2010-11; 5 years.
 Source: Data warehouse. Compiled by PRO.
 Same datasets as used in Program Planning; although with all terms included.

DRAFT

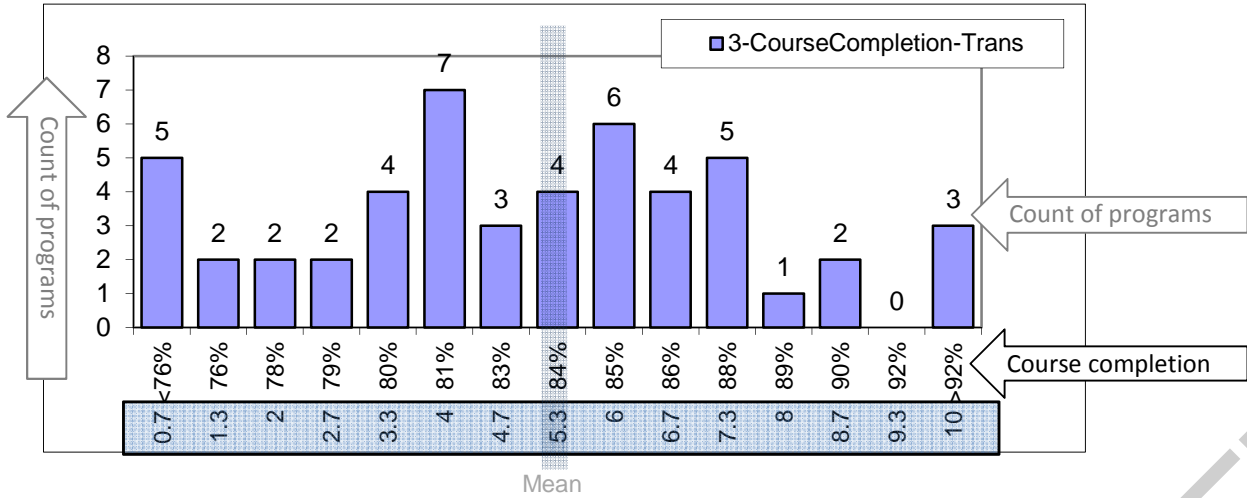
Criterion 3: Student Success
Transfer and Basic Skills Programs

Mean	84.0%
Median	84.0%
Standard Deviation	5.0%
Minimum	75.7%
Maximum	96.9%
Count	50

Course completion rate



Points score bands are established at each one-quarter standard deviation, working outward from the mean.

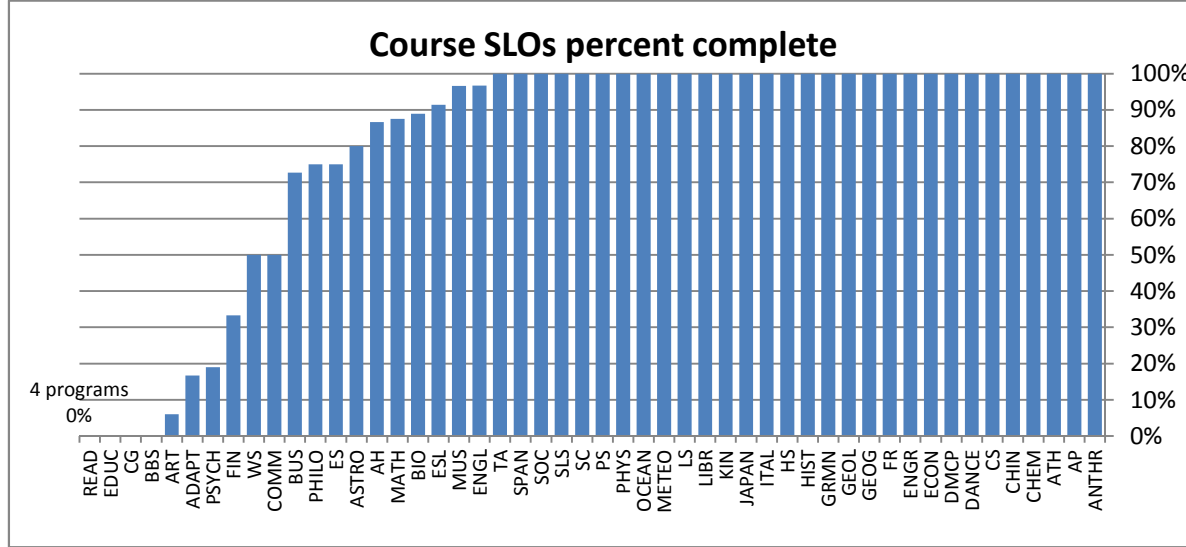


Possible Points = 10

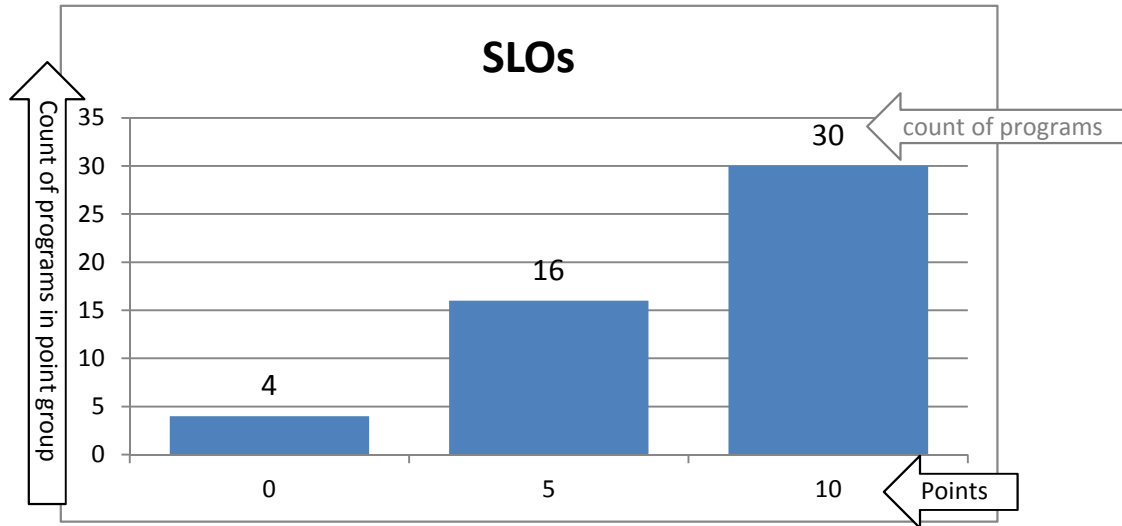
Academic years 2006-07 through 2010-11; 5 years.
 Source: Data warehouse. Compiled by PRO.
 Same datasets as used in Program Planning; although with all terms included.

DRAFT

Criterion 3: Student Success
Transfer and Basic Skills Programs



Percent	Points
0%	0
1%	5
100%	10



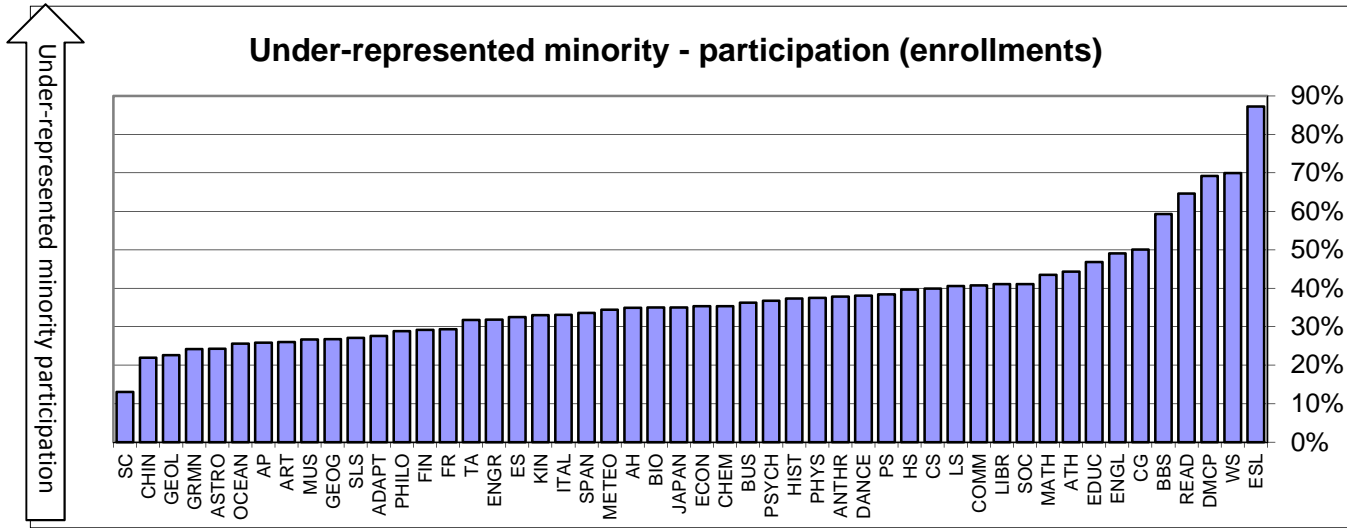
Possible Points = 10

Course SLOs completed/not, prepared by the Office of Instruction.
 Source for active courses: Datatel CRSE. Compiled by PRO.

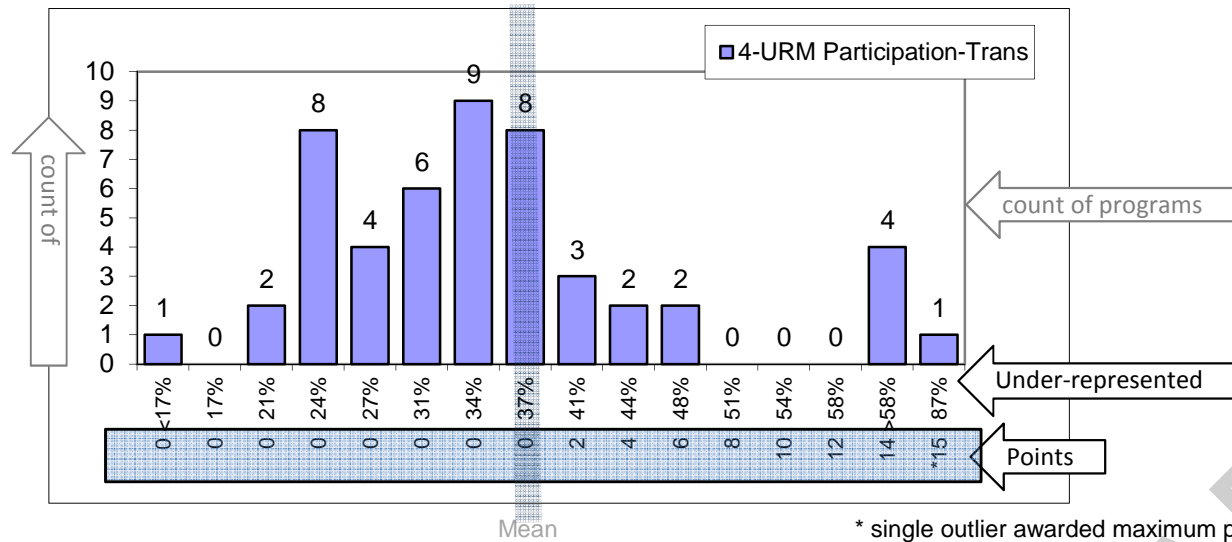
DRAFT

Criterion #4: Access
Transfer and Basic Skills Programs

Mean	37.5%
Median	35.2%
Standard Deviation	13.5%
Minimum	13.0%
Maximum	87.3%
Count	50



Points score bands are established at each one-quarter standard deviation, working outward from the mean.



Possible Points = 15

Academic years 2006-07 through 2010-11; 5 years.

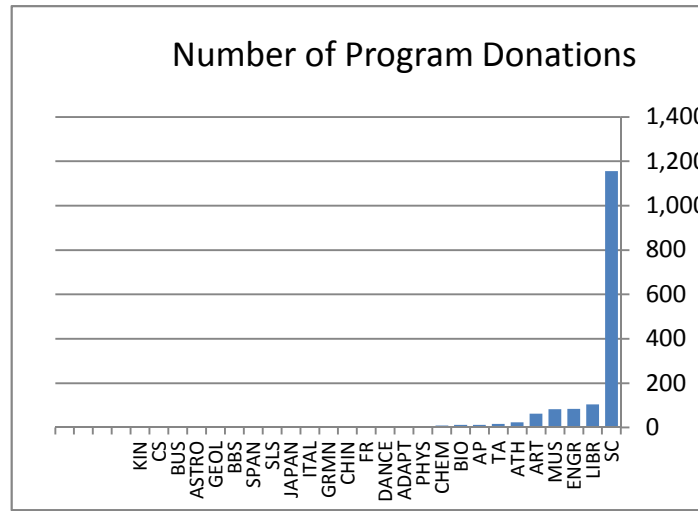
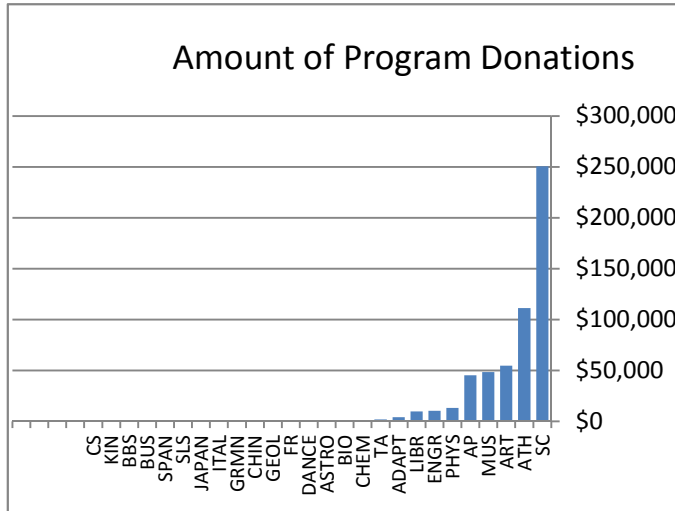
Source: Data warehouse. Compiled by PRO.

Same datasets as used in Program Planning; although with all terms included.

Under-represented includes American Indian, African American, Filipino, Hispanic/Latino, Pacific Islander, Multiple ethnicities

DRAFT

Criterion #5: Community financial support
Transfer and Basic Skills Programs

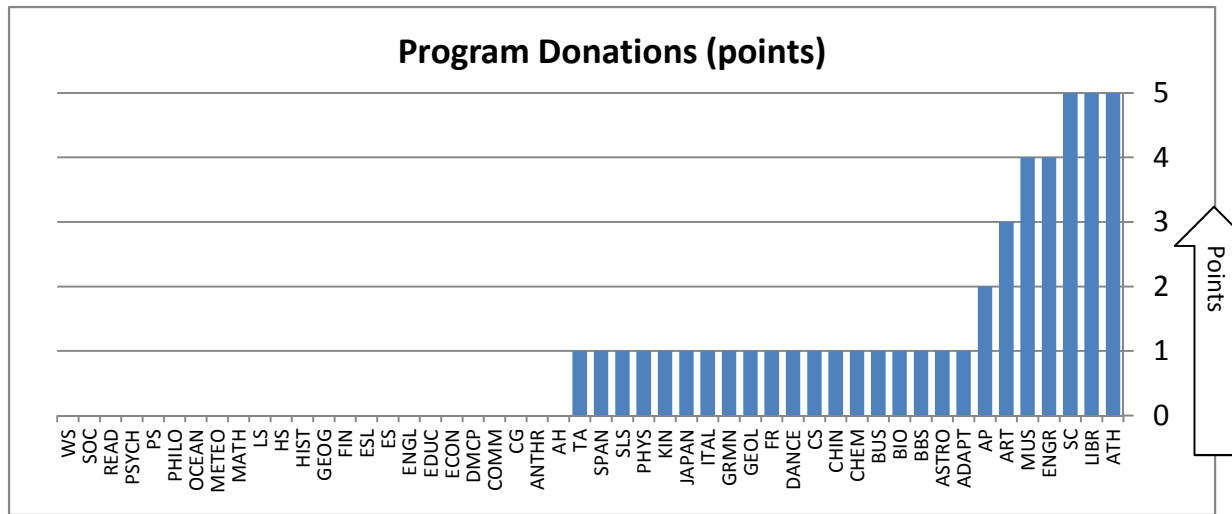


24 programs had no donations

Number	Points
0	0
1	1
25	2
50	3
75	4
100	5

Amount	Points
\$0	0
\$1	1
\$25,000	2
\$50,000	3
\$75,000	4
\$100,000	5

Possible Points = 5



Points scores are calculated for number of donations, then for amount of donations - the final score is the maximum of the two.

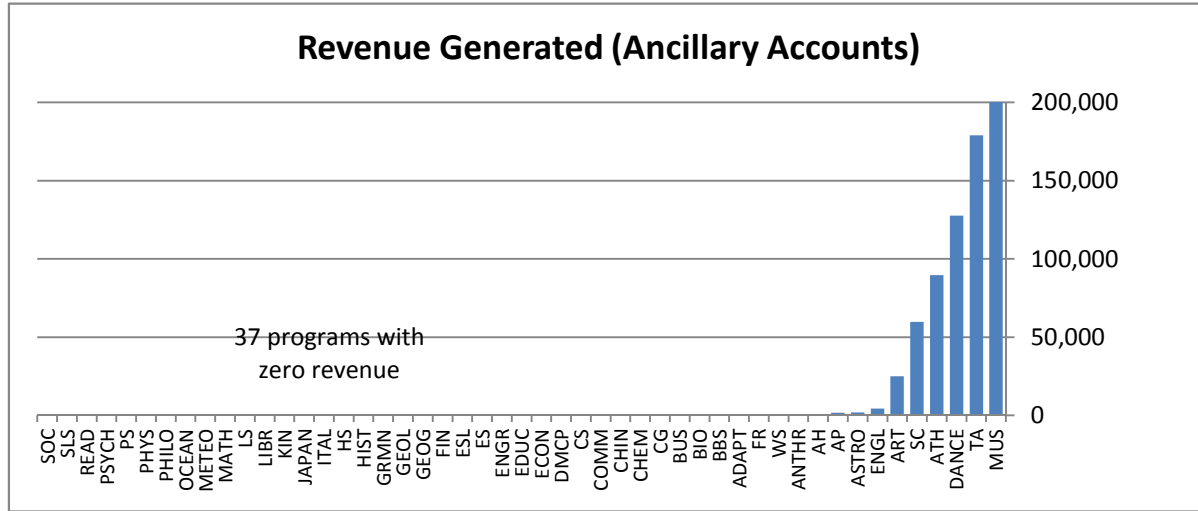
Source: Cabrillo College Foundation; funds which are associated with specific department(s).

Academic years 2006-07 through 2010-11; 5 years of contributions to these funds.

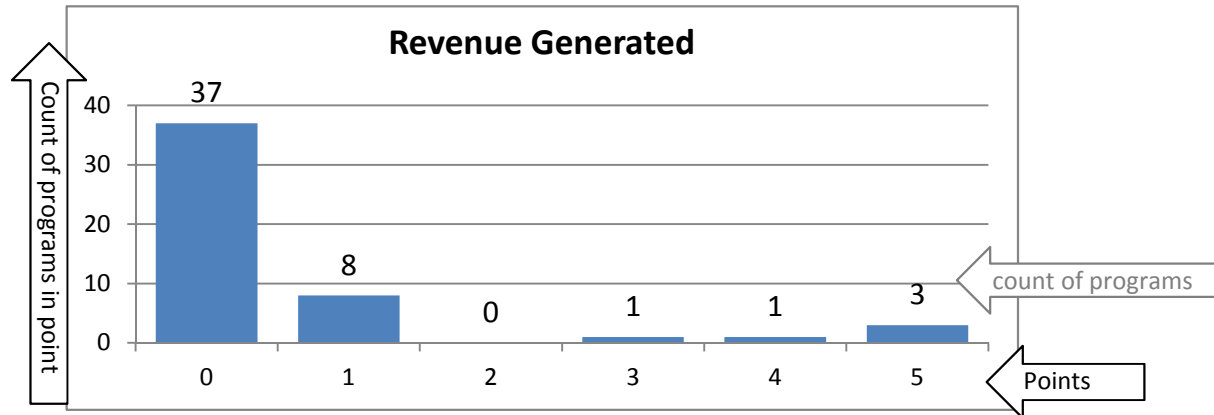
When a fund is associated with multiple departments, amounts (but not the number of donors) are divided among the departments.

DRAFT

Criterion #5: Community financial support
Transfer and Basic Skills Programs



Amount	Points
\$0	0
\$1	1
\$25,000	2
\$50,000	3
\$75,000	4
\$100,000	5



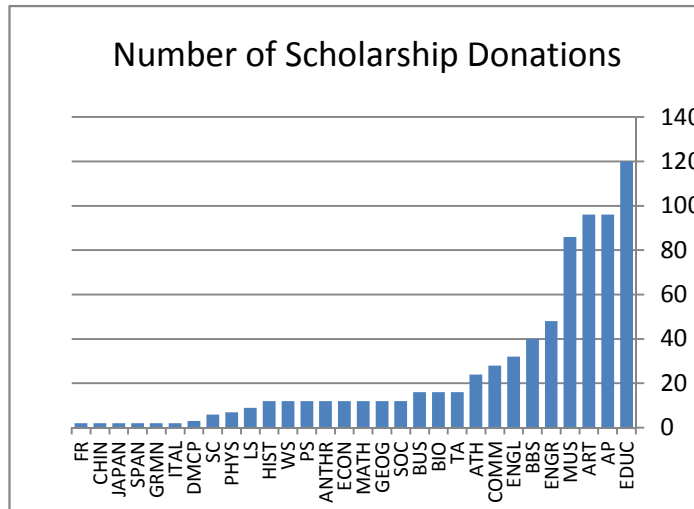
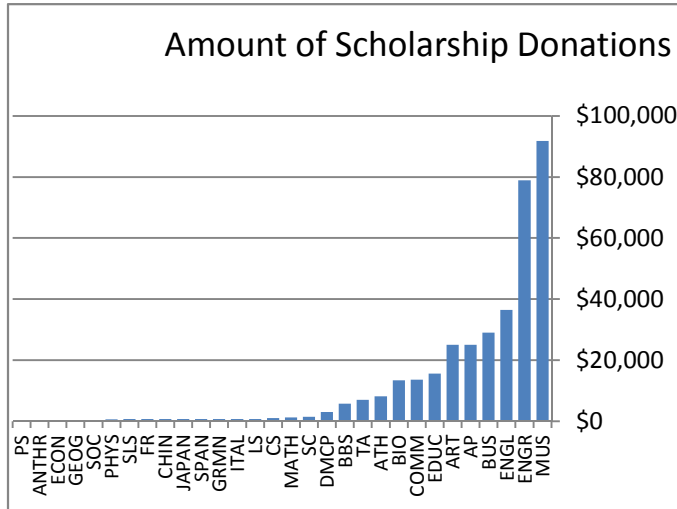
Possible Points = 5

Source: Business Office. Trust & Agency Fund 79 (ancillary) funds associated with department cost center. Academic years 2006-07 through 2010-11.

The three departments that operate business, CAHM, DM and HORT, are each awarded maximum points.

DRAFT

Criterion #5: Community financial support
Transfer and Basic Skills Programs

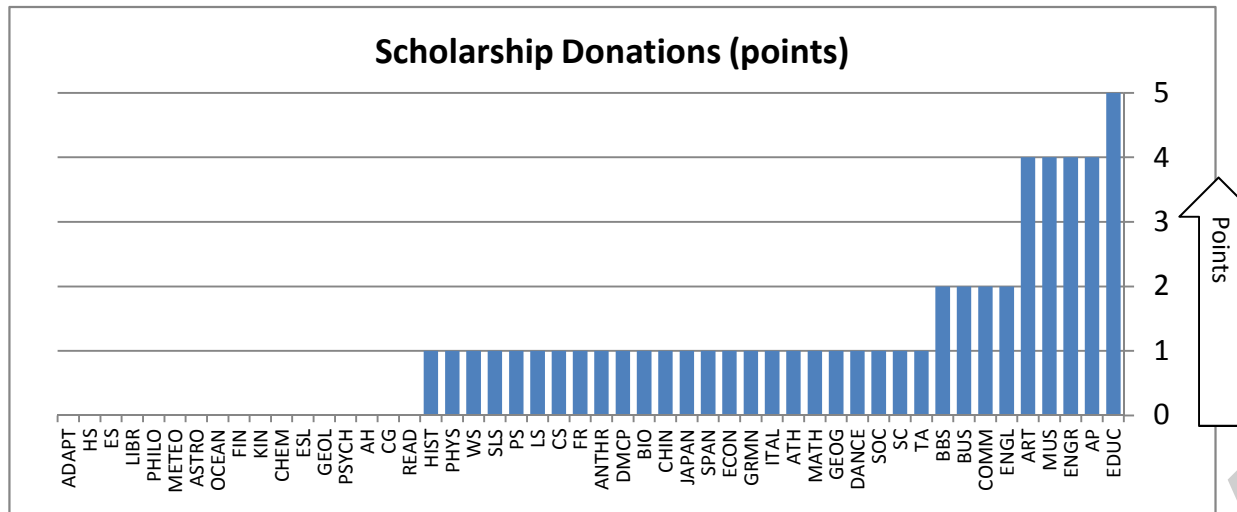


17 programs had no donations

Number	Points
0	0
1	1
25	2
50	3
75	4
100	5

Amount	Points
\$0	0
\$1	1
\$25,000	2
\$50,000	3
\$75,000	4
\$100,000	5

Possible Points = 5



Points scores are calculated for number of donations, then for amount of donations - the final score is the maximum of the two.

Source: Cabrillo College Foundation; funds which are associated with specific department(s).

Academic years 2006-07 through 2010-11; 5 years of contributions to these funds.

When a fund is associated with multiple departments, amounts (but not the number of donors) are divided among the departments.

DRAFT