



AGENDA ITEM BACKGROUND

TO: GOVERNING BOARD		DATE <b>October 2, 2008</b>
FROM: <b>PRESIDENT</b>		
SUBJECT: <b>Distance Education 2007/2008 Annual Report</b>		ENCLOSURE(S)  <b>Page 1 of 10</b>
REASON FOR BOARD CONSIDERATION <b>INFORMATION</b>	ITEM NUMBER	

**Background:**

Definition: *“Distance education means instruction in which the instructor and student are separated by distance and interact through the assistance of communication technology.”<sup>1</sup>*

Regulations revised in 1994 in Title 5 of the California Code of Regulations require districts to make an annual report of their distance education activity to their local governing boards, and then forward a copy to the State Chancellor’s Office. This report to the Cabrillo College Governing Board will discuss Cabrillo’s Distance Education Program, data about students, enrollment, course completion rates, faculty training, and program growth.

**I. DISTANCE EDUCATION PROGRAM HIGHLIGHTS**

Growth in the Distance Education (DE) program continues with a 12 percent increase in unduplicated enrollment and a 15 percent increase in duplicated enrollment for 2007/2008. Demographic data on distance education students was provided by the Planning and Research Office (PRO). *See Figure 1 and Figure 2.* A 2007 statewide study of California Community College Distance Education programs shows an average annual increase of 18.73 percent in DE student (unduplicated) headcount compared to an average annual increase of .82 percent in traditional education student headcount.<sup>2</sup> A total of 10,257 students (duplicated headcount) enrolled in distance courses during the 2007/08 academic year compared to 8845 in 2006/07. This report presents a picture of Distance Education at Cabrillo in five sections, (1) Distance Education program highlights, (2) characteristics of students who choose distance education sections, (3) performance of students in DE sections, (4) courses offered in 2007-2008, and (5) a summary conclusion.

In response to a growing student demand for more distance course choices, the Office of Instruction sponsored curriculum development grants for faculty developing new online courses. The objective of these grants was to increase DE offerings that respond to student learning needs in both the transfer and career and technical education areas. As a result of the program’s growth, the Accrediting Commission for Community and Junior Colleges granted Cabrillo approval to offer an AA/AS degree in liberal studies and degree programs in Business, Accounting, Computer Applications and Business Technology, and Public Safety. This means more than 50 percent of each program’s courses can be completed online. The program now provides more flexible options for degree/certificate bound students.

<sup>1</sup> Section 55370 of Subchapter 4 of Chapter 6 of Division 6 of Title 5 of the California Code of Regulations.

<sup>2</sup> Distance Education Report, Fiscal Years 1995–96 through 2005–06, July 2007, California Community Colleges, Prepared by Ken Nather, Specialist, Academic Planning & Development, Academic Affairs Division

Administrator Initiating Item: Renée M. Kilmer	Academic and Professional Matter <input checked="" type="checkbox"/> Yes <input type="checkbox"/> No	Final Disposition
	If yes, Faculty Senate Agreement <input checked="" type="checkbox"/> Yes <input type="checkbox"/> No	
	Senate President Signature	

The Teaching and Learning Center (TLC) provides the needed faculty training. The TLC continues to offer instructional design services for faculty developing web-based materials for both online and on-campus classes. Services include face-to-face and online training in distance learning pedagogy, web design, podcasting, course design and teaching with a learning management system which includes assessment techniques and use of plagiarism detection software.

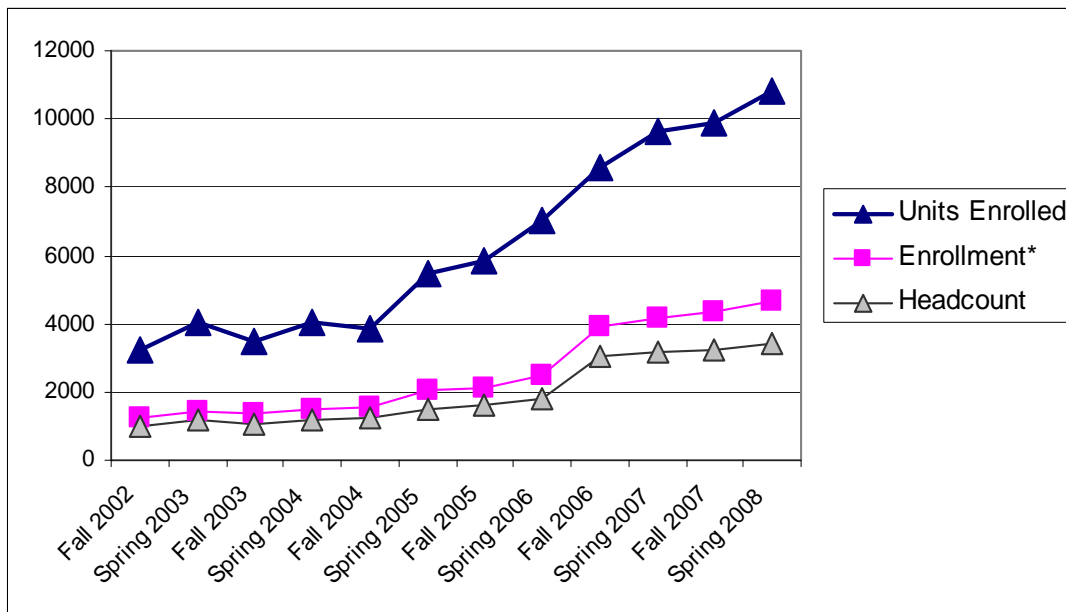


Figure 1 2002–2008 Units Enrolled, Enrollment and Headcount in Distance Education

**Units Attempted, Enrollments & Headcount In Distance Education**

Term	Units Enrolled	Enrollment*	Headcount
FA 02	3,221	1,216	972
SP 03	4,042	1,438	1,154
SM 03	216	72	70
FA 03	3,492	1,373	1,078
SP 04	4,016	1,522	1,193
SM 04	771	257	244
FA 04	3,878	1,533	1,242
SP 05	5,459	2,028	1,523
SM 05	1,057	333	310
FA 05	5,863	2,111	1,597
SP 06	7,009	2,486	1,786
SM 06	1,848	593	514
FA 06	8,572	3,923	3,023
IN 07	336	154	131
SP 07	9,609	4,175	3,199
SM 07	2,866	1,098	928
FA 07	9,864	4,324	3,261
IN 08	277	159	142
SP 08	10,842	4,676	3,413

\*Students may be enrolled in more than one Distance course. Each course a student takes, whether online or TV, counts as one enrollment. Students may be counted more than once.

Figure 2 2002–2008 Units Attempted & Duplicated Enrollment in Distance Education

Training resources include best practices as outlined in the Distance Education Guidelines from the Chancellor’s Office<sup>3</sup> and the Distance Learning Manual published by the Accrediting Commission for Community and Junior Colleges<sup>4</sup>. Additionally, the TLC has partnered with Adaptive Computing (Disabled Student Programs and Services) to train faculty and staff in designing accessible web materials. The Library staff has also been proactive in providing workshops during Flex Week on Web 2.0 technologies for online teaching and learning.

The Teaching & Learning Center provides tech support to students and faculty through multiple modes: phone, in-person, and web-based. The TLC employs a full-time assistant for program support and a part-time student assistant for the student help desk. Additionally, the Library and Computer Technology Center staff provides assistance to students using the campus course management system for both online, hybrid, and web-enhanced instruction. Just over 50 percent of Blackboard course accounts are used to augment on-campus instruction with a web component and there are currently 5,755 active student accounts and 231 instructor accounts for fall 2008. Open access computing for students is available in two locations on the Aptos Campus, the Library and Computer Technology Center, and at the Watsonville Center. Wireless access is available at various locations across the main campus including the cafeteria.

The Distance Education Committee in collaboration with the Office of Instruction began work last fall on a 3–5 year program plan that addresses the growing needs of our e-learning students. The process began with a review of our technology use, evaluating the most commonly used course management systems throughout the State, and faculty development strategies. This semester the Committee will discuss ways to improve success and retention, and improve access for basic skills students. The DE Committee expects to complete a plan by early spring and take it to Instruction Council, Faculty Senate, and the Technology Committee before the end of the term.

Program restructuring in the Distance Education component of the Chancellor’s Office has been challenging for new and existing staff in Sacramento. However, this past spring the program did publish changes to Title 5 (Section 58009) related to distance education.<sup>5</sup> Alternate (and more equitable) attendance procedures will be used for certain distance education labs. These changes were made to conform to changes made to section 58003.1, full-time equivalent student computation.

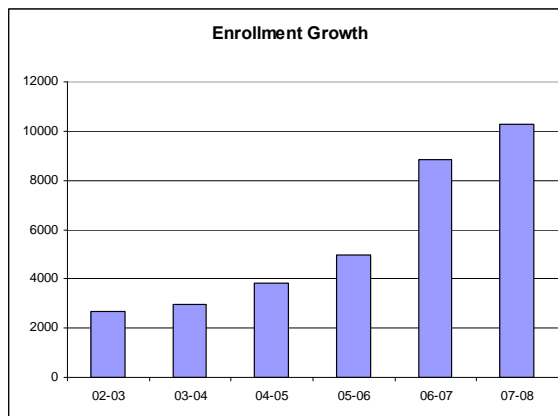
---

## II. CHARACTERISTICS OF STUDENTS WHO CHOOSE DE SECTIONS

---

The profile of the distance education student is changing over time. Sixty-two percent are females similar to the statewide average. High School graduates comprise 61 percent of the population, followed by 13-15 percent with a BA degree or greater. Students ages 18–25 make up 56 percent of the student population. Hispanics make up 19% of the distance education student population, the same percentage statewide.

Most students, 99 percent, live in-state, and 87.7 percent live in Santa Cruz County. Residents of the San Lorenzo Valley and Scotts Valley make up a little less than 17 percent of the distance student population, and Watsonville 16.9 percent.



**Figure 3** Enrollment Growth from 2002–2008

<sup>3</sup> Distance Education Guidelines, California Community Colleges, 2008, Academic Planning & Development, Academic Affairs Division

<sup>4</sup> Distance Learning Manual, August 2004, Accrediting Commission for Community and Junior Colleges, Western Association of Schools and Colleges

<sup>5</sup> Distance Education Guidelines, California Community Colleges, 2008, Academic Planning & Development, Academic Affairs Division

### 2007-2008 Enrollment by Gender

	Female Ssn	Male Ssn	Acad Year Total
SM 02	78.57%	21.43%	
FA 02	70.86%	29.14%	
SP 03	66.23%	33.77%	2693
SM 03	63.89%	34.72%	
FA 03	65.91%	34.09%	
SP 04	62.39%	37.61%	2960
SM 04	64.98%	34.63%	
FA 04	63.64%	36.36%	
SP 05	62.57%	37.43%	3814
SM 05	63.96%	35.74%	
FA 05	60.98%	38.98%	
IN 06	55.81%	44.19%	
SP 06	61.58%	38.42%	4971
SM 06	64.08%	35.58%	
FA 06	59.63%	39.96%	
IN 07	59.74%	40.26%	
SP 07	59.56%	39.87%	8840
SM 07	57.74%	41.35%	
FA 07	60.45%	38.92%	
IN 08	68.55%	31.45%	
SP 08	61.83%	37.66%	10257

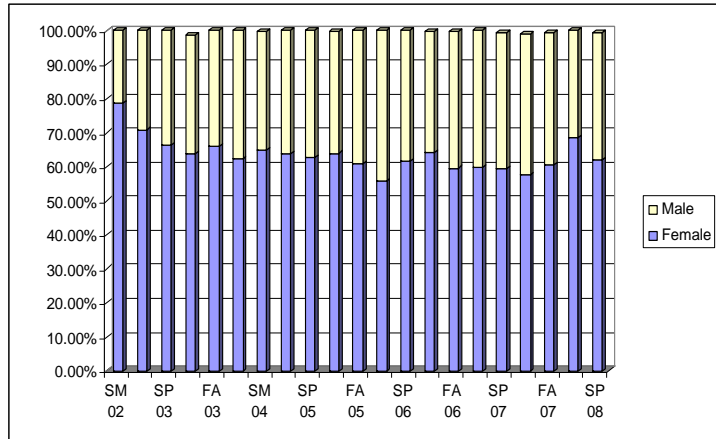


Figure 5 2002–2008 Gender Enrollment

Figure 4 Gender Enrollment Percentages

### 2002-2008 Enrollment by Ethnicity

	Af. Am.	Am. Ind.	Asian	Filipino	Hispanic	Other	Unknown	White
SM 02	7.14%	0.00%	2.38%	0.00%	11.90%	2.38%	0.00%	76.19%
FA 02	1.15%	1.40%	2.06%	1.07%	16.71%	2.06%	2.06%	73.50%
SP 03	1.32%	1.04%	2.86%	1.04%	18.45%	2.65%	2.30%	70.33%
SM 03	2.78%	1.39%	4.17%	0.00%	23.61%	1.39%	2.78%	63.89%
FA 03	1.54%	1.32%	4.46%	1.39%	17.41%	1.76%	1.10%	71.03%
SP 04	2.50%	2.04%	3.55%	0.79%	17.36%	1.78%	1.71%	70.28%
SM 04	1.56%	2.33%	6.23%	1.56%	13.62%	1.56%	2.33%	70.82%
FA 04	2.94%	0.92%	3.20%	1.11%	19.10%	2.16%	2.62%	67.95%
SP 05	3.40%	1.73%	3.45%	1.28%	17.90%	1.82%	3.16%	67.26%
SM 05	3.90%	0.30%	5.71%	0.90%	17.12%	2.70%	3.00%	66.37%
FA 05	3.27%	1.33%	3.41%	1.14%	19.16%	2.13%	2.89%	66.67%
IN 06	4.65%	0.00%	4.65%	0.00%	9.30%	0.00%	4.65%	76.74%
SP 06	2.57%	1.25%	4.38%	1.17%	18.30%	2.53%	4.34%	65.45%
SM 06	3.71%	1.35%	6.07%	0.84%	20.07%	2.87%	4.22%	60.88%
FA 06	1.84%	1.05%	3.65%	1.33%	18.86%	2.93%	4.92%	65.42%
IN 07	4.55%	1.95%	5.84%	1.30%	22.73%	4.55%	5.19%	53.90%
SP 07	2.06%	1.34%	3.86%	1.84%	19.29%	2.20%	5.08%	64.33%
SM 07	1.91%	0.36%	4.83%	1.37%	19.49%	2.64%	7.56%	61.84%
FA 07	2.43%	1.11%	3.33%	1.04%	17.95%	2.34%	5.94%	65.86%
IN 08	0.63%	0.63%	7.55%	1.89%	28.30%	3.14%	4.40%	53.46%
SP 08	1.88%	1.03%	3.96%	1.33%	19.23%	2.22%	5.58%	64.78%

## 2007–2008 Enrollment by Zip Code

Headcount Detail in Santa Cruz County				Headcount from California		Headcount by State	
Santa Cruz Cities	Zip Codes	AY 07-08 Students	AY 07-08 by % in zip	California Counties	AY 07-08 Students	All States	AY 07-08 Students
Aptos	95001	36	0.7%	Alameda	33	CA	6,123
Aptos	95003	644	11.9%	Butte	1	CO	4
Ben Lomond	95005	176	3.3%	Calaveras	2	CT	1
Boulder Creek	95006	176	3.3%	Colusa	1	FL	1
Brookdale	95007	22	0.4%	Contra Costa	21	HI	3
Capitola	95010	262	4.8%	El Dorado	12	ID	1
Davenport	95017	16	0.3%	Fresno	2	IL	1
Felton	95018	195	3.6%	Humboldt	5	MI	1
Freedom	95019	90	1.7%	Kern	1	MN	3
Mt Hermon	95041	22	0.4%	Kings	2	MO	2
Santa Cruz	95060	1,000	18.5%	Lake	1	NC	3
Santa Cruz	95061	66	1.2%	Los Angeles	16	NM	1
Santa Cruz	95062	935	17.3%	Madera	2	NV	1
Santa Cruz	95063	40	0.7%	Marin	15	NY	2
Santa Cruz	95064	24	0.4%	Mariposa	6	OR	1
Santa Cruz	95065	180	3.3%	Mendocino	3	TX	5
Scotts Valley	95066	305	5.6%	Merced	5	UT	1
Scotts Valley	95067	16	0.3%	Modoc	2	VA	1
Soquel	95073	286	5.3%	Monterey	201	WA	4
Watsonville	95076	888	16.4%	Napa	7	<b>Total:</b>	<b>6,159</b>
Watsonville	95077	25	0.5%	Nevada	3		
<b>Total:</b>		<b>5,404</b>	<b>100.0%</b>	Orange	3		
				Placer	4		
				Riverside	4		
				Sacramento	18		
				San Benito	77		
				San Bernardino	2		
				San Diego	16		
				San Francisco	15		
				San Joaquin	4		
				San Luis Obispo	10		
				San Mateo	23		
				Santa Barbara	2		
				Santa Clara	152		
				Santa Cruz	5,404		
				Shasta	4	<b>California</b>	<i>AY 07-08</i>
				Siskiyou	1	<b>Counties</b>	<i>Students</i>
				Solano	1		
				Sonoma	11	Tuolumne	5
				Stanislaus	5	Ventura	8
				Tehama	1	Yuba	2
				Tulare	1	<b>Total</b>	
						<b>Headcount:</b>	<b>6,123</b>

Summary (2007-2008)	#	% of Total*
Santa Cruz County	5,404	87.7
Other California Counties	719	11.7
Other States	36	0.6
<b>Total Headcount</b>	<b>6,159</b>	<b>100.0</b>

Note: Total Headcount is the total unduplicated count of students in all zip codes in that year.

Source: Data Warehouse

### III. PERFORMANCE OF STUDENTS IN DE SECTIONS

Retention in DE courses averaged 79.4 percent in 07-08, up seven percent over last year. The data below reflects duplicate counts, due to students enrolling in multiple sections per term. Overall success rates increased four percent to 56.9 percent in 07-08 — similar to the statewide average of 57 percent. According to the 2007 Chancellor's Office Distance Education Program Study, Hispanic and Black completion rates are at least 10% lower than White and Asian/Pacific Islander student populations.<sup>6</sup>

Termname	SuccCnt	SuccPct	RetnCnt	RetnPct	Total
SM 07	721	65.70%	927	84.40%	1,098
FA 07	2,373	54.90%	3,332	77.10%	4,324
IN 08	115	72.30%	142	89.30%	159
SP 08	2,623	56.10%	3,741	80.00%	4,676
Total/Avg	5,832	56.90%	8,142	79.40%	10,257
	*These are duplicated counts, due to students enrolling in multiple sections per term.				

#### Success and Retention Rates by Departments by Term.

Termname	SM 07			FA 07			IN 08			SP 08			Total	Total	Total
Dept	SuccPct	RetnPct	Total	SuccPct	RetnPct	Total	SuccPct	RetnPct	Total	SuccPct	RetnPct	Total	SuccPct	RetnPct	Total
ACCT				52.2%	85.4%	157				55.7%	84.5%	194	54.1%	84.9%	351
AH				75.7%	84.7%	111				75.0%	90.0%	100	75.4%	87.2%	211
ANTHR				71.2%	78.8%	52				65.6%	94.4%	90	67.6%	88.7%	142
AP										58.3%	83.3%	24	58.3%	83.3%	24
BIO										92.6%	100.0%	27	92.6%	100.0%	27
BUS	47.1%	91.2%	34	48.5%	78.0%	132	65.0%	85.0%	20	46.2%	82.4%	119	48.5%	81.6%	305
CABT				30.7%	84.2%	114				31.8%	80.5%	220	31.4%	81.7%	334
CAHM	68.6%	82.9%	35	65.8%	81.6%	38				68.3%	82.9%	41	67.5%	82.5%	114
CG	71.8%	97.4%	39	55.1%	84.3%	127				70.9%	87.3%	110	63.8%	87.3%	276
CHIN				34.2%	81.6%	38				40.0%	85.0%	20	36.2%	82.8%	58
CIS	63.6%	72.7%	11							48.5%	63.6%	33	52.3%	65.9%	44
CJ				55.1%	74.8%	107				47.5%	71.2%	59	52.4%	73.5%	166
COMM				65.0%	82.9%	123	83.0%	91.5%	47	82.2%	92.4%	118	75.0%	88.2%	288
DM	81.7%	91.7%	60	65.2%	82.6%	92				67.2%	82.4%	119	69.7%	84.5%	271
ENGL	69.8%	84.9%	106	49.9%	72.2%	349	59.1%	95.5%	22	49.1%	74.3%	393	52.2%	75.3%	870

Success and Retention Rates by Departments by Term. *continued*

Termname	SM 07	SM 07	SM 07	FA 07	FA 07	FA 07	IN 08	IN 08	IN 08	SP 08	SP 08	SP 08	Total	Total	Total
Dept	SuccPct	RetnPct	Total	SuccPct	RetnPct	Total	SuccPct	RetnPct	Total	SuccPct	RetnPct	Total	SuccPct	RetnPct	Total
FIN	45.5%	93.9%	33										45.5%	93.9%	33
FR	51.9%	85.2%	27	67.7%	78.0%	127				60.2%	80.5%	113	62.9%	79.8%	267
FT	54.1%	70.3%	37	67.7%	77.2%	158				62.7%	71.8%	110	64.3%	74.4%	305
GEOG										35.5%	82.3%	62	35.5%	82.3%	62
GRMN				64.2%	71.7%	53				76.9%	86.5%	52	70.5%	79.0%	105
HIST	67.5%	80.0%	40	60.4%	75.0%	96				50.3%	74.0%	169	55.7%	75.1%	305
HS				47.0%	88.6%	132				62.4%	89.4%	141	54.9%	89.0%	273
ITAL				50.6%	70.6%	170				43.0%	89.3%	121	47.4%	78.4%	291
JAPAN				40.0%	72.0%	75				51.4%	75.7%	70	45.5%	73.8%	145
JOURN				30.4%	56.5%	23				84.4%	87.5%	32	61.8%	74.5%	55
LIBR	62.1%	72.4%	29	38.6%	74.8%	127				48.5%	68.7%	163	45.8%	71.5%	319
MATH	36.2%	67.7%	127	38.8%	61.2%	312				37.9%	60.7%	290	38.0%	62.1%	729
MUS	63.2%	87.1%	163	58.4%	84.5%	238				53.2%	78.2%	216	57.9%	83.0%	617
OCEAN				33.3%	83.3%	24				59.1%	100.0%	22	45.7%	91.3%	46
PE				53.6%	78.6%	28				54.2%	79.2%	24	53.8%	78.8%	52
PHILO				40.0%	60.0%	45							40.0%	60.0%	45
PS	80.2%	90.1%	91	71.0%	85.5%	69				64.6%	80.8%	130	71.0%	84.8%	290
PSYCH										37.2%	81.4%	43	37.2%	81.4%	43
RE				40.4%	53.2%	109	76.2%	85.7%	21	44.5%	89.1%	119	45.4%	73.1%	249
READ	45.5%	77.3%	22	57.1%	96.4%	28				55.2%	82.8%	29	53.2%	86.1%	79
SLS	93.8%	100.0%	32	69.3%	86.4%	176				83.5%	95.9%	170	77.8%	91.8%	378
SOC				53.8%	83.8%	80				62.9%	77.6%	116	59.2%	80.1%	196
SPAN	78.3%	87.5%	184	61.4%	77.5%	761	69.4%	87.8%	49	59.2%	78.3%	769	62.4%	79.2%	1763
TA	82.1%	82.1%	28	54.7%	77.4%	53				68.8%	87.5%	48	65.9%	82.2%	129
TOTAL/AVG.	65.7%	84.4%	1,098	54.9%	77.1%	4,324	72.3%	89.3%	159	56.1%	80.0%	4,676	56.9%	79.4%	10,257

---

#### IV. DISTANCE EDUCATION COURSES OFFERED 2007–2008

---

The table below lists courses offered in the 2007-2008 academic year. An additional **23 new** sections were offered. Scheduling online courses in summer session and Cybersession allows the college to meet student needs for high demand full-term courses and fluctuations in enrollment. New courses for 2007-2008 are indicated in the chart below by an asterisk (\*).

	Course name	Description	Units
1	ACCT 1A	Financial Accounting	4.00
2	ACCT 1B	Managerial Accounting	4.00
3	ACCT 151A	Intro to Accounting: Bookkeeping Concepts	4.00
4	ACCT 159	Computer Accounting	4.00
5	ACCT 163	Using Quickbooks	3.00
6	AH 10	Appreciation/Intro to Visual Arts	3.00
7	AH 20A	Art From Prehistoric through Medieval Periods	3.00
8	AH 20B	Art from the Renaissance to the Present	3.00
9	* ANTHRO 1	Intro to Anthropology: Physical	3.00
10	* ANTHRO 1L	Physical Anthropology Lab	1.00
11	* ANTHRO 2	Introduction to Anthropology: Cultural	1.00
12	AP 45	Contemporary Trends in Photography	3.00
13	BUS 5	Business Information Systems	4.00
14	BIO 7	Head and Neck Anatomy	2.00
15	BUS 18	Business Law	3.00
16	BUS 20	Introduction to Business	3.00
17	BUS 60	International Business	3.00
18	* BUS 75	Business, Society and Government	3.00
19	BUS 170	International Marketing	3.00
20	* CABT 41	Excel for Windows	3.00
21	CABT 102	10-Key Calculator	1.00
22	CABT 103A	Data Entry on Computer	1.00
23	CABT 103B	Advanced Data Entry	1.00
24	CABT 110A	Comp Keyboarding-Alpha Keys	0.50
25	CABT 110B	Comp Keyboarding-#/ Symbols	0.50
26	CABT 110C	Comp Keyboarding -Speed Devel	0.50
27	CABT 157	Business and Technical Writing	3.00
28	CAHM 20	Nutrition	3.00
29	CG 1	College Success	3.00
30	CG 52	Study Skills	1.00
31	CG 54	Career Planning	2.00
32	*CIS 82	Intro to Routing Technologies and Theory (CISCO)	4.00
33	*CIS 131	Perl Programming in Unix	4.00
34	*CIS 165PH	Intro to Programming Database-driven Web Sites with PHP	4.00
35	CJ 2	Criminal Law	3.00
36	CJ 3	Criminal Evidence	3.00
37	CJ 4	Criminal Courts and Procedures	3.00
38	CJ 5	The Police Role in the Community	3.00
39	CJ 7	Criminal Justice Written Communications	3.00

	Course name	Description	Units
40	*CJ 12	Contemporary Issues in the Justice System	3.00
41	COMM 1	Public Speaking	3.00
42	COMM 6	Listening	1.00
43	DM 1	Introduction to Digital Media	4.00
44	*DM 4	Digital Graphics Using Photoshop and Illustrator	3.00
45	DM 70	Web Design Basics Using Dreamweaver	3.00
46	DM 72	Web Design and Animation Using Flash	3.00
47	DM 76	Design for Web Media	3.00
48	*DM 173A	Interactive Projects Using Flash	3.00
49	ENGL 100	Elements of Writing	3.00
50	ENGL 100L	Writing Laboratory	1.00
51	*ENGL 155CJ	Writing Study Skills for Criminal Justice	0.50
52	ENGL 1A	College Composition	3.00
53	ENGL 1B	Composition & Literature	3.00
54	*ENGL 1C	Advanced Composition	3.00
55	ENGL 2	Composition & Critical Thinking	3.00
56	*FIN 4	Money Management	3.00
57	FT 1	Fire Protection Organization	3.00
58	FT 2	Fire Prevention Technology	3.00
59	*FT 4	Building Construction for Fire Protection	3.00
60	*FT 5	Fire Behavior and Combustion	3.00
61	FT 7	Introduction to Hazardous Materials	3.00
62	FT 8	Wildlands Fire Control	3.00
63	FR 20C	Adv French Grammar and Comp	4.00
64	*GEOG 1	Physical Geography	3.00
65	*HIST 17A	U.S. History to 1865	3.00
66	HIST 17B	U.S. History since 1865	3.00
67	HS 10	Personal Health	3.00
68	HS 10	Personal Health	3.00
69	JOURN 21	Mass Communications	3.00
70	LIBR 10	Library Research	1.00
71	*LIBR 18	Advanced Internet Searching	1.00
72	MATH 12	Elementary Statistics	4.00
73	MATH 152	Intermediate Algebra	4.00
74	MATH 154	Elementary Algebra	4.00
75	MATH 254	Essential Mathematics	3.00
76	MUS 6	Fundamentals of Music	3.00
77	MUS 10	Music Appreciation	3.00
78	MUS 11LA	Latin American Music Appreciation	3.00
79	MUS 12	World Music	3.00
80	OCEAN 10	Introduction to Oceanography	4.00
81	*PE 12A	First Aid: Responding to Emergencies	3.00
82	PHILO 10	Ethics	3.00
83	PS 1	Introduction to Government	3.00
84	*PSYCH 1	General Psychology	3.00
85	READ 52	Speed and Comprehension	2.00
86	RE 150	Real Estate Principles	3.00
87	RE 152	Real Estate Practice	3.00
88	RE 154A	Legal Aspects of Real Estate	3.00

	Course name	Description	Units
89	*RE193	Real Estate Computer Applications	3.00
90	*SOC 1	Intro to Sociology: Understanding Society	3.00
91	SOC 2	Contemporary Social Problems	3.00
92	SPAN 1A	Begin Span-1st half Destinos	2.00
93	SPAN 1B	Begin Span-2nd half Destinos	2.00
94	SPAN 3	Intermediate Spanish	4.00
95	SPAN 4	Intermediate Spanish	4.00
96	SPAN 50L	Spanish Language Lab	1.00
97	TA 9	App of Theatre Arts	3.00

---

## V. DE@CABRILLO

---

Distance education at Cabrillo College is a reflection of distance education nationwide. Our programs and services provide access to a unique group of students who normally would not be enrolled in exclusively on-campus courses. Under the guidance of the Distance Education Committee and the Office of Instruction, the distance education program strives to keep abreast of emerging trends and manage effective change to improve student learning outcomes.

The Instructional Technology Council, which is an affiliated council of the American Association of Community Colleges, provides leadership, information and resources on the effective use of technology. Cabrillo College participated in their 2008 annual survey<sup>7</sup> and study results also show comparable distance education trends to national trends. Seventy-seven percent of the colleges surveyed use the same course management system as Cabrillo (Blackboard/WebCT), and the greatest challenge to administrators is support staff needed for training and technical assistance. Enrollment trends average a 15 percent annual increase from fall to fall, and 64 percent indicated they offer one or more online degrees. Course enrollment caps in math and English composition are similar, and 93 percent allow faculty to offer online and on-campus testing (blended). The average retention rate for students was 72 percent and 48 percent were “nontraditional” or older than 26 years.

The distance education landscape is changing rapidly. It demands responsibility to provide support services to both distance education faculty and students. Cabrillo continues to provide a full range of online services to remote students, whether they are distance student, or students learning on campus. Services include admissions, enrollment, library, tech support, orientation, academic advising, financial aid, textbook ordering, and academic assistance. Strong support services and effective communication between the institution and student equals academic success.

---

<sup>7</sup> 2007 Distance Education Survey Results, Tracking the Impact of e-Learning at Community Colleges, Instructional Technology Council, American Association of Community Colleges, April 2008