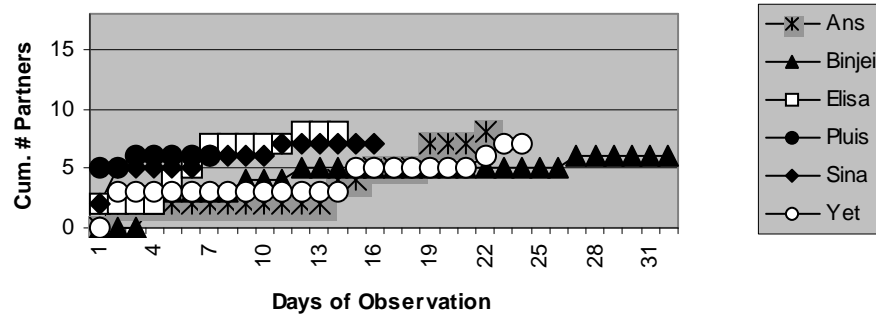
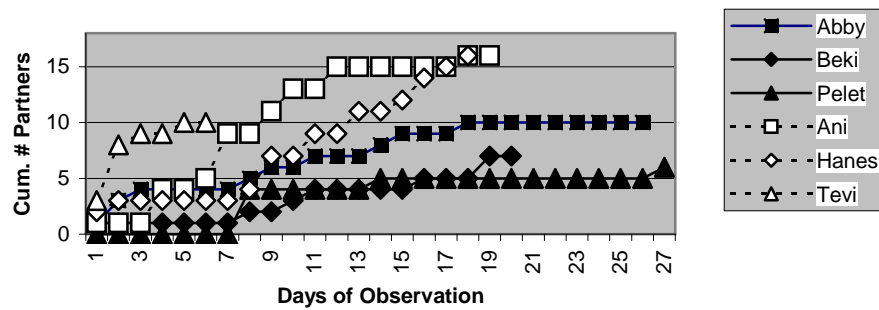


Figure 3.1 Percent Time in Parties (by Nearest Neighbor Distance)

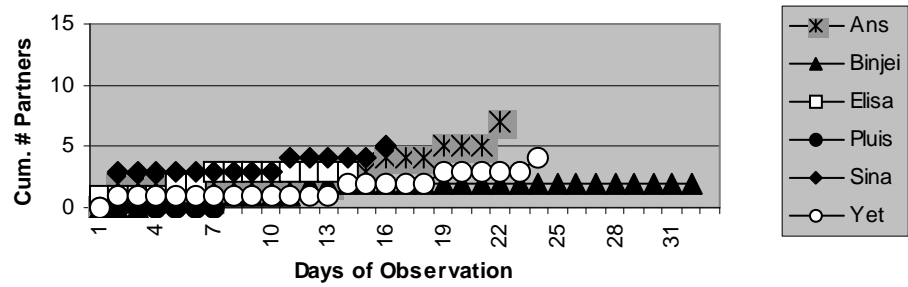


a) 50m, Ketambe

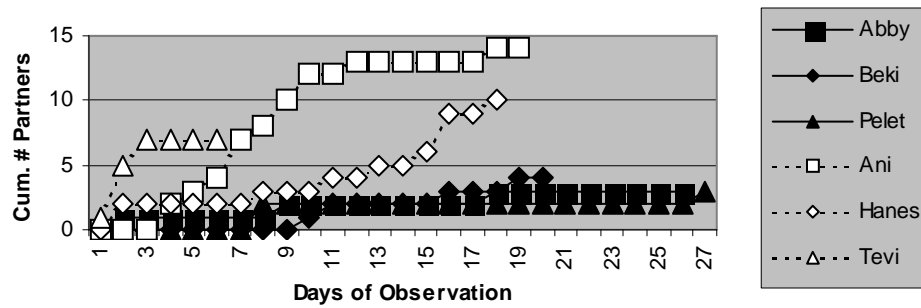


b) 50m, Suaq Balimbing

Figures 3.2a-b Cumulative number of partners by observation day for each focal at Ketambe and Suaq Balimbing (northern females designated with squares, southern/central females with triangle), for $\leq 50m$ distances.

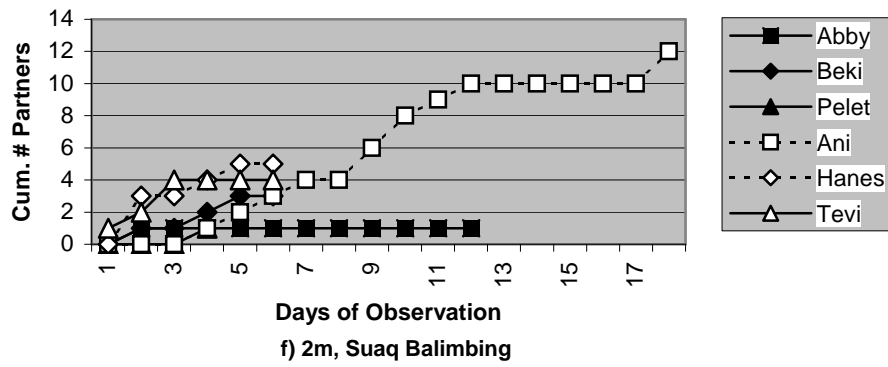
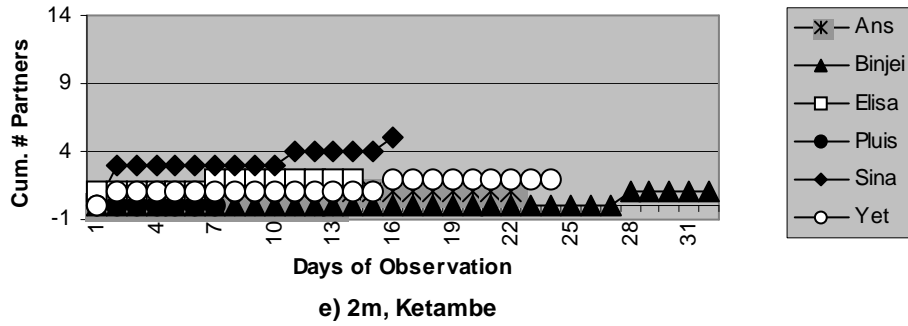


c) 10m, Ketambe

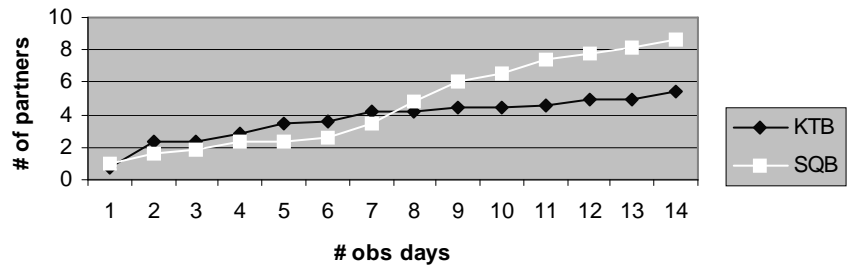


d) 10m, Suaq Balimbing

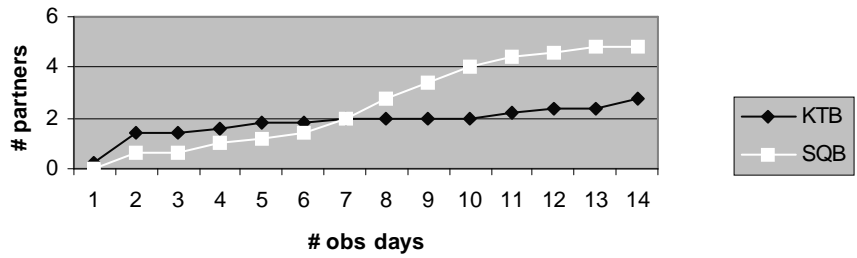
Figures 3.2c-d Cumulative number of partners by observation day for each focal at Ketambe and Suaq Balimbing (northern females designated with squares, southern/central females with triangle), for $\leq 10m$ distances.



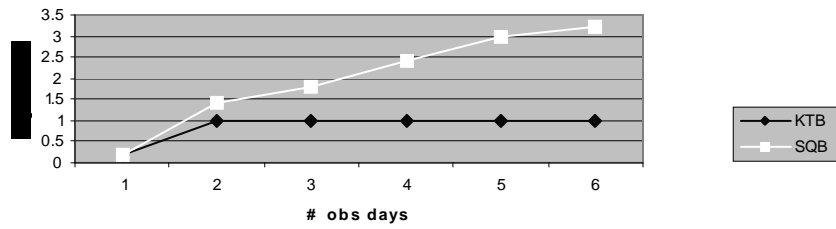
Figures 3.2e-f Cumulative number of partners by observation day for each focal at Ketambe and Suaq Balimbing (northern females designated with squares, southern/central females with triangle), for $\leq 10\text{m}$ distances.



a) 50m Mean Cumulative # of Partners

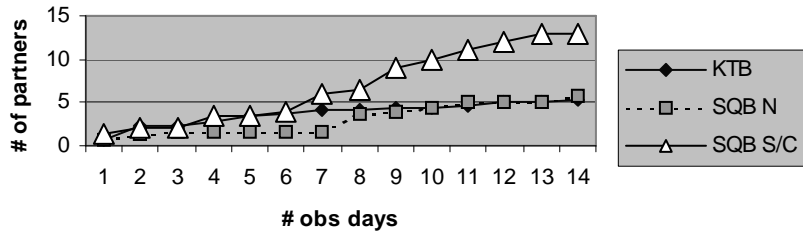


b) 10m Mean Cumulative # of Partners

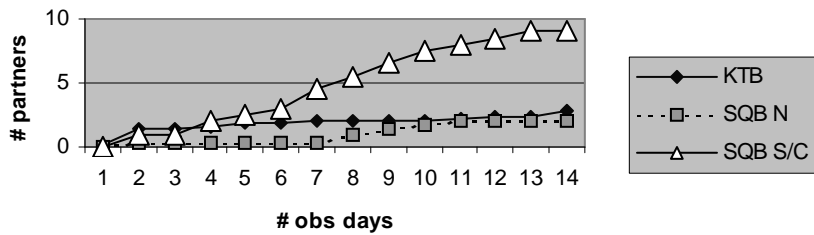


c) 2m Mean Cumulative # of Partners

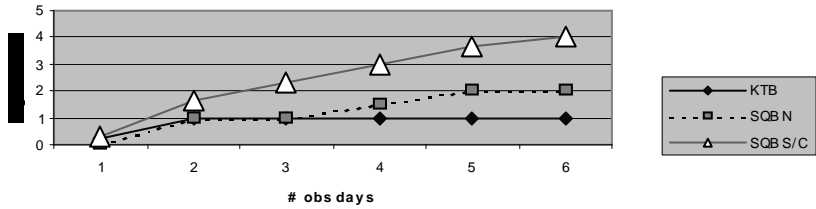
Figures 3.3a-c Means of the cumulative number of partners for each observation day with the focal.



a) 50m Mean Cumulative # of Partners



b) 10m Mean Cumulative # of Partners



c) 2m Mean Cumulative # of Partners

Figures 3.4a-c Means of the cumulative number of partners for each observation day with the focal.