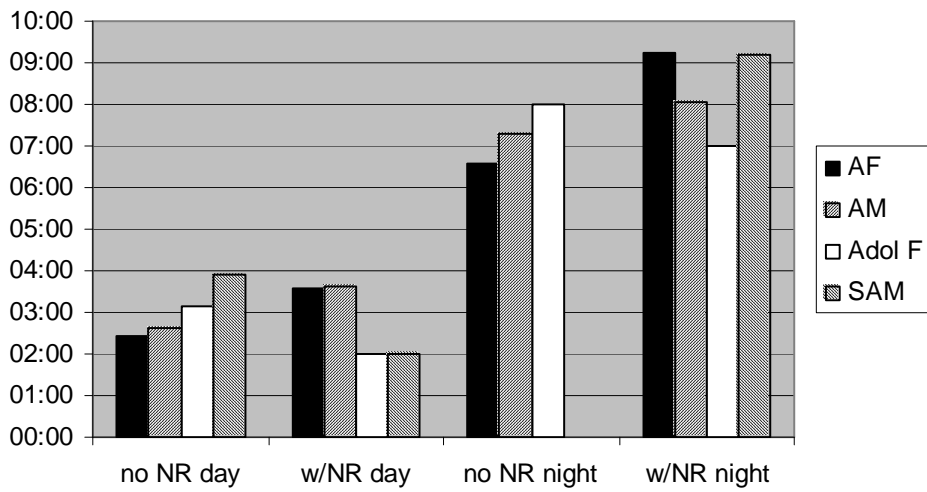
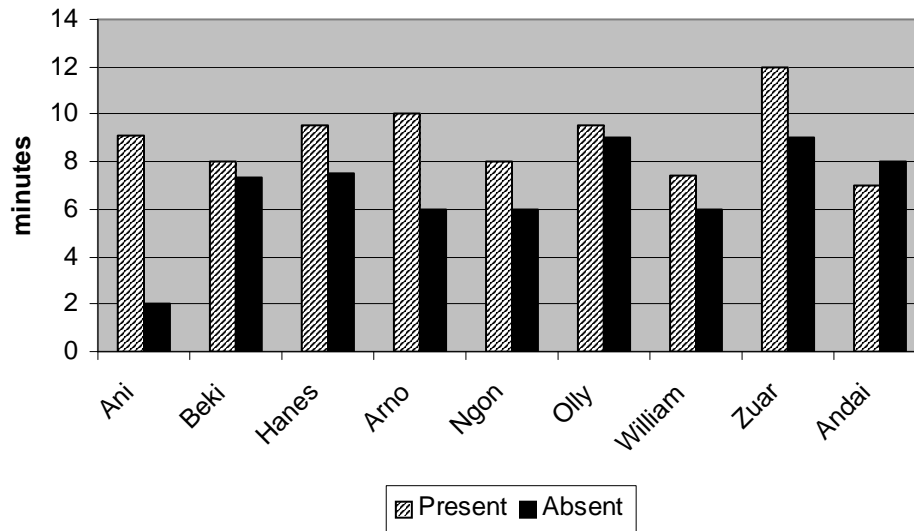


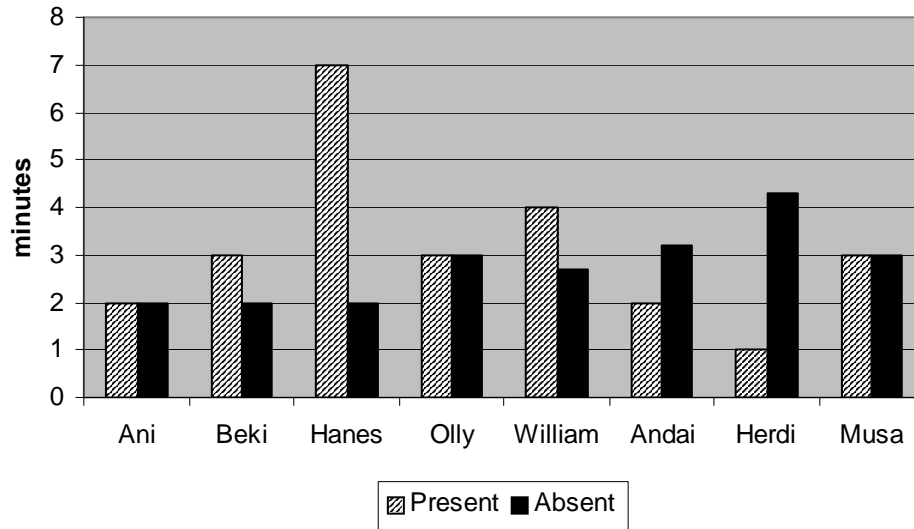
**Figure 4.1** Nest positions in tree: 1) on horizontal branch near trunk (often where two horizontal branches emerge); 2) on horizontal branch(es) away from trunk; 3) in acute angle of large branches/trunk split; 4) branches from two trees woven together.



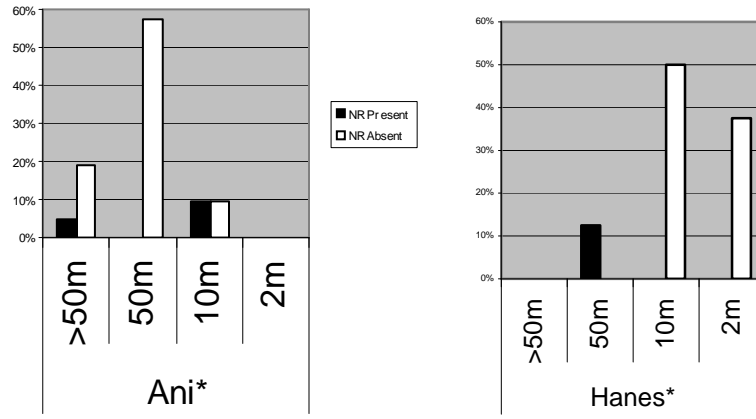
**Figure 4.2** Average nest building duration by age/sex class and presence/absence of nest raspberries (NR). *Age/Sex Classes:* AF=Adult (parous) Female; AM=Adult (flanged) Male; Adol. F = Adolescent Female (recently independent, not sexually mature); SAM=Sub-Adult (unflanged, sexually mature) Male.



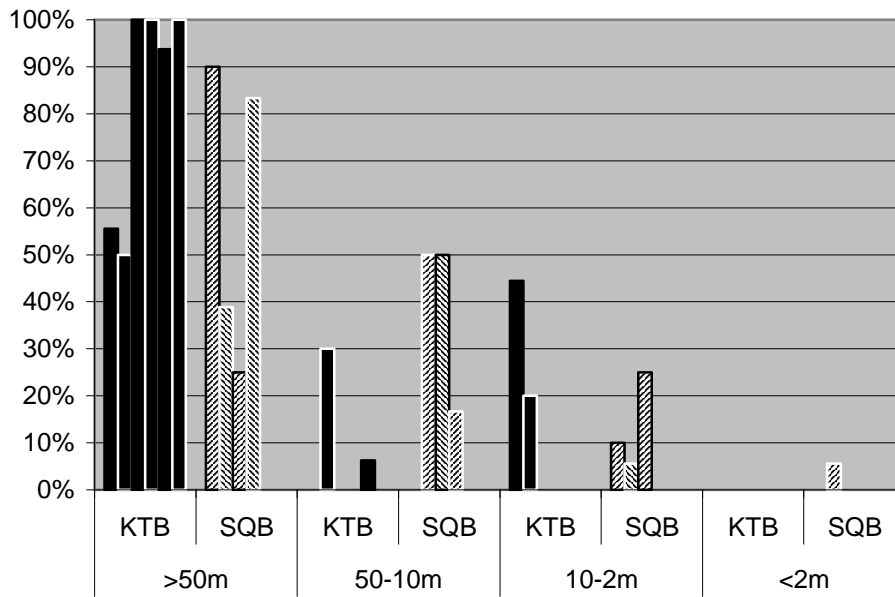
**Figure 4.3** Mean night nest building duration for individuals, for nests where the nest raspberry was recorded as present or absent.



**Figure 4.4** Mean day nest building duration for individuals, for nests where the nest raspberry was recorded as present or absent.



**Figure 4.5** Percent of day nests with or without nest raspberries (NR Present or NR Absent) with nearest neighbors at each distance class: >50m (no independent conspecific present), ≤50m, ≤10m or ≤2m, for focals with significant  $X^2$  relationships.



**Figure 4.6** Percent of nests built with nearest neighbor at various distance classes for Ketambe (solid) and Suaq Balimbing (striped) females.