

AIR SEALING CRITICAL DETAILS

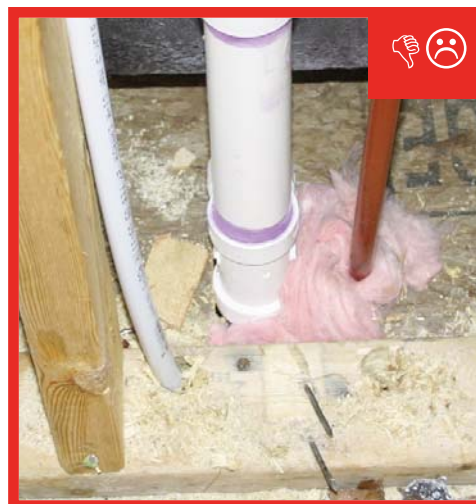
1

PENETRATIONS – Plumbing/electrical/HVAC penetrations to exterior/unconditioned space are air sealed with foam, caulk, or mastic. NO fibrous insulation is used to fill holes



1

PENETRATIONS – Plumbing/electrical/HVAC penetrations to exterior/unconditioned space are air sealed with foam, caulk, or mastic. NO fibrous insulation is used to fill holes



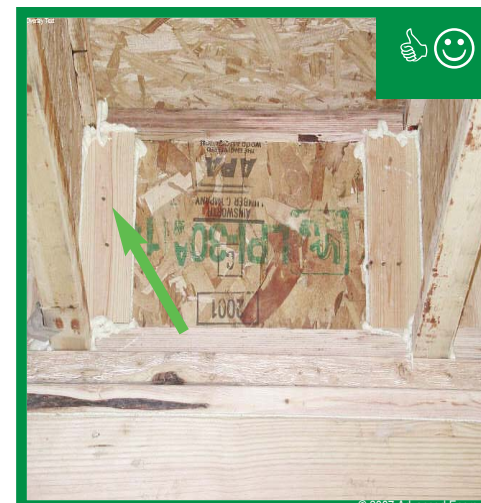
1

PENETRATIONS – Plumbing/electrical/HVAC penetrations to exterior/unconditioned space are air sealed with foam, caulk, or mastic. NO fibrous insulation is used to fill holes



2

CAPS/BLOCKING – All shafts/chases, cantilevers, and blocking are air sealed with a compressible sealant, caulk, foam, or mastic



AIR SEALING CRITICAL DETAILS

3

FIRE SEALING — Fire-rated caulking along with flashing or UL-rated collars must be installed continuous around all combustion flues and maintain proper clearance from combustion materials



4

ATTIC ACCESS — Access doors to knee wall or crawlspace areas, attic hatches, and drop down stairs are weather stripped and insulated



5

CAN LIGHTS — Recessed lighting fixtures installed in insulated assemblies are air tight and IC-rated and sealed to drywall with caulk, foam, or gasket



6

DOORS & WINDOWS — Backer rod or low expansion foam is used to seal around windows and doors

